

CATALOGUE NO. 8635.2  
EMBARGOED UNTIL 11:30 A.M. 21 DECEMBER 1994

**TOURIST ACCOMMODATION, VICTORIA, SEPTEMBER QUARTER 1994**

**MAIN FEATURES**

SEPTEMBER QUARTER 1994  
COMPARED WITH  
SEPTEMBER QUARTER 1993

**HOTELS, MOTELS AND GUEST HOUSES**

- Rooms available decreased by 2.1 per cent from 30,316 to 29,680 and bed spaces decreased by 1.9 per cent to 81,988.
- Room nights occupied increased by 9.3 per cent to 1,315,429 and the room occupancy rate increased from 43.2 per cent to 48.2 per cent.
- By star grading, the highest room occupancy rate at 65.3 per cent was achieved by four star rated establishments compared with rates of 62.2 per cent for five star establishments and 46.7 per cent for three star establishments.
- Guest nights increased by 8.8 per cent to 2,183,637 and the bed occupancy rate increased from 26.2 per cent to 29.0 per cent.
- Guest arrivals at hotels, motels and guest houses increased by 6.2 per cent to 1,174,726 while the average length of stay increased from 1.8 days to 1.9 days.
- Takings from accommodation increased by 12.9 per cent from \$100.6m to \$113.7m while average takings per room night occupied increased from \$84 to \$86.

**HOLIDAY FLATS, UNITS AND HOUSES**

- The number of units, etc. available for short-term letting increased by 4.4 per cent from 2,987 to 3,119 while unit nights occupied increased by 17.1 per cent to 127,246.
- The unit occupancy rate increased from 39.6 per cent to 44.4 per cent.
- Unit lettings increased from 27,437 to 30,204 while the average length of stay increased from 4.0 days to 4.2 days.
- Accommodation takings increased by 29.9 per cent from \$8.6m to \$11.2m and average takings per unit night occupied increased from \$80 to \$88.

**CARAVAN PARKS**

- Capacity available increased by 1.0 per cent from 67,006 to 67,693 sites and cabins, etc. while site nights occupied increased by 3.0 per cent from 2,203,954 to 2,270,301.
- The site occupancy rate rose by 0.8 percentage points to 36.6 per cent.
- Long-term residents occupied 6,457 sites, etc. (9.5 per cent), while 14,804 sites (21.9 per cent) were permanently reserved but only casually occupied by their tenants and an average of 3,416 sites (5.0 per cent) were occupied by other short-term guests.
- Accommodation takings increased by 6.1 per cent from \$15.3m to \$16.2m with average takings per site night occupied unchanged at \$7.

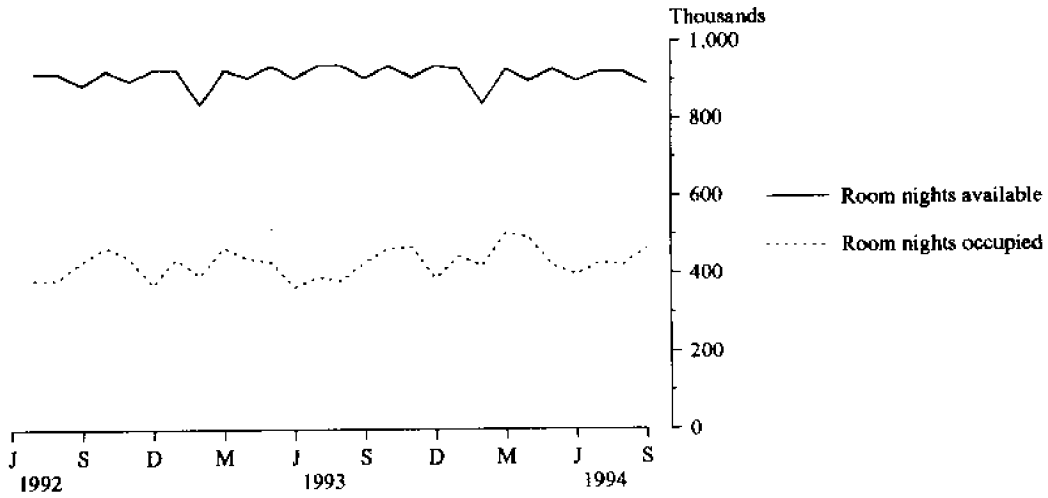
**VISITOR HOSTELS**

- Bed spaces available increased by 15.6 per cent from 2,531 to 2,927.
- Guest nights occupied rose by 21.7 per cent to 82,428 and the bed occupancy rate increased from 29.1 per cent to 30.9 per cent.
- Guest arrivals increased from 26,868 to 34,084 while the average length of stay decreased from 2.5 days to 2.4 days.
- Accommodation takings rose from \$0.9m to \$1.1m while average takings per guest night remained at \$13.

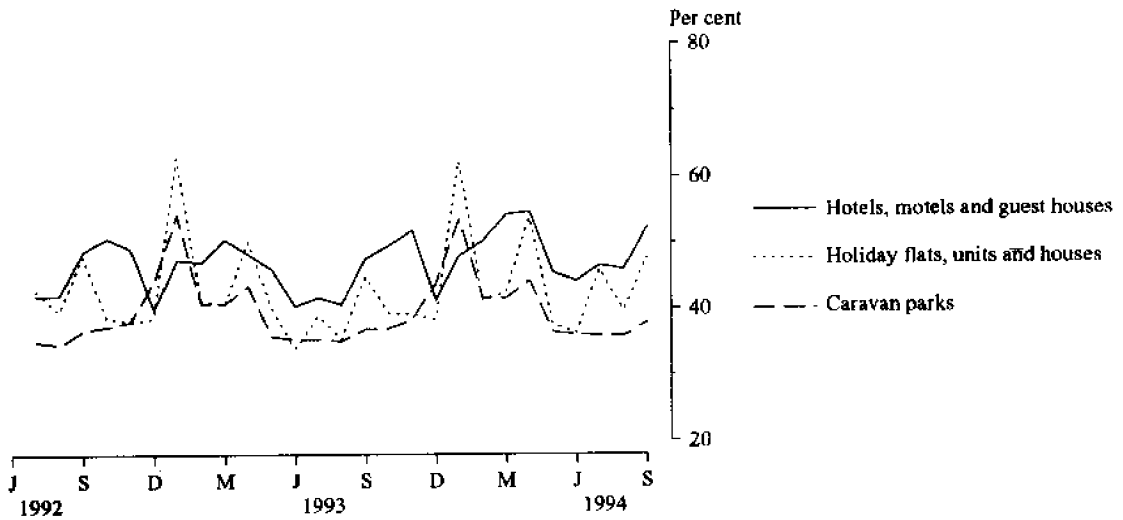
**INQUIRIES**

- *for further information about statistics in this publication and the availability of related unpublished statistics, contact Vern Wills on 008 077285 or any ABS office.*
- *for information about other ABS statistics and services, refer to the back page of this publication.*

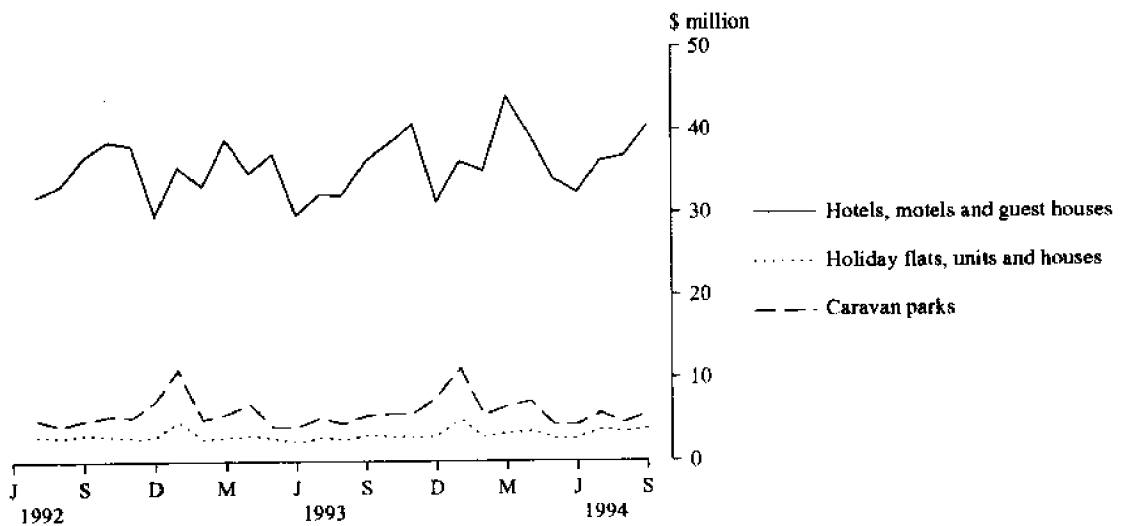
**MONTHLY ROOM NIGHTS AVAILABLE AND OCCUPIED:  
HOTELS, MOTELS AND GUEST HOUSES,  
VICTORIA**



**MONTHLY OCCUPANCY RATES,  
VICTORIA**



**MONTHLY TAKINGS FROM ACCOMMODATION,  
VICTORIA**



## CONTENTS

<i>Table</i>		<i>Page</i>
"	Main features	1
"	Diagrams	2
1	Summary of hotels, motels and guest houses with facilities, Victoria	4
2	Summary of caravan parks, Victoria	5
3	Summary of holiday flats, units and houses, Victoria	6
4	Summary of visitor hostels, Victoria	6
5	Hotels, motels and guest houses with facilities by star grading, Melbourne City, Melbourne Statistical Division and Victoria	7
6	Hotels, motels and guest houses with facilities by statistical division, Victoria	9
7	Hotels, motels and guest houses with facilities: Statistical divisions and selected statistical local areas, Victoria	12
8	Holiday flats, units and houses by statistical division, Victoria	16
9	Caravan parks: Statistical divisions and selected statistical local areas, Victoria	18
10	Caravan parks by statistical division, Victoria	22
11	Visitor hostels by statistical division, Victoria	25
"	Explanatory Notes	26
"	Changes to geographic boundaries, Victoria (Effective 1 July 1994)	30
"	Reference maps – statistical divisions of Victoria and statistical local areas of Melbourne Statistical Division	32

TABLE 1 — SUMMARY OF HOTELS, MOTELS AND GUEST HOUSES WITH FACILITIES, VICTORIA (a)

Particulars	Unit	Quarter ended				Year ended			
		June 1993	September 1993	December 1993	March 1994	June 1994	September 1994	September 1993	September 1994
<b>LICENSED HOTELS WITH FACILITIES</b>									
Establishments	No.	215	212	199	196	194	189	..	..
Guest rooms	No.	9,815	9,934	10,279	10,152	10,089	10,010	..	..
Bed spaces	No.	23,615	23,764	24,793	24,772	24,577	24,462	..	..
Employment (persons)	No.	9,269	9,138	9,699	9,908	9,553	9,431	..	..
Room nights occupied	'000	424.1	428.5	532.1	535.2	502.2	527.6	1,746.7	2,097.0
Room occupancy rate	per cent	47.5	47.0	56.3	58.6	54.7	57.3	49.2	56.7
Guest nights	'000	650.2	654.6	827.6	833.7	769.8	813.1	2,710.5	3,244.1
Bed occupancy rate	per cent	30.3	30.0	36.3	37.4	34.4	36.2	31.9	36.1
Guest arrivals	'000	318.5	314.2	393.2	375.0	359.7	383.3	1,291.1	1,511.2
Average length of stay	days	2.0	2.1	2.1	2.2	2.1	2.1	2.1	2.1
Takings from accommodation	\$'000	47,190	46,741	58,112	59,753	52,512	58,159	194,082	228,535
<b>MOTELS AND GUEST HOUSES WITH FACILITIES</b>									
Establishments	No.	836	831	826	821	824	814	..	..
Guest rooms	No.	20,463	20,382	19,986	19,836	19,879	19,670	..	..
Bed spaces	No.	59,979	59,806	58,439	57,909	58,006	57,526	..	..
Employment (persons)	No.	6,839	6,825	6,501	6,585	6,388	6,412	..	..
Room nights occupied	'000	811.1	774.9	792.3	837.5	807.8	787.9	3,275.7	3,225.5
Room occupancy rate	per cent	43.6	41.4	43.1	46.9	44.7	43.6	44.1	44.6
Guest nights	'000	1,403.4	1,352.3	1,384.6	1,509.5	1,405.5	1,370.5	5,735.6	5,670.1
Bed occupancy rate	per cent	25.7	24.6	25.8	29.0	26.7	25.9	26.4	26.8
Guest arrivals	'000	813.0	791.9	834.4	879.7	817.4	791.4	3,330.5	3,322.9
Average length of stay	days	1.7	1.7	1.7	1.7	1.7	1.7	1.7	1.7
Takings from accommodation	\$'000	54,567	53,895	52,390	55,701	53,334	55,510	222,443	216,935
<b>TOTAL HOTELS, MOTELS AND GUEST HOUSES WITH FACILITIES</b>									
Establishments	No.	1,051	1,043	1,025	1,017	1,018	1,003	..	..
Guest rooms	No.	30,278	30,316	30,265	29,988	29,968	29,680	..	..
Bed spaces	No.	83,594	83,570	83,232	82,681	82,583	81,988	..	..
Employment (persons)	No.	16,108	15,963	16,200	16,493	15,941	15,843	..	..
Room nights occupied	'000	1,235.2	1,203.4	1,324.4	1,372.7	1,310.0	1,315.4	5,022.3	5,322.5
Room occupancy rate	per cent	44.9	43.2	47.6	50.9	48.1	48.2	45.7	48.7
Guest nights	'000	2,053.6	2,006.8	2,212.1	2,343.2	2,175.3	2,183.6	8,446.2	8,914.3
Bed occupancy rate	per cent	27.0	26.2	28.9	31.5	29.0	29.0	27.9	29.6
Guest arrivals	'000	1,131.5	1,106.0	1,227.6	1,254.7	1,177.1	1,174.7	4,621.6	4,834.1
Average length of stay	days	1.8	1.8	1.8	1.9	1.8	1.9	1.8	1.8
Takings from accommodation	\$'000	101,757	100,636	110,502	115,454	105,846	113,668	416,524	445,470

(a) From December quarter 1993, establishments with fewer than 5 rooms have been formally excluded from the scope of this collection. See Explanatory Note 2 (page 26).

TABLE 2 — SUMMARY OF CARAVAN PARKS, VICTORIA

Particulars	Unit	Quarter ended				Year ended			
		June 1993	September 1993	December 1993	March 1994	June 1994	September 1994	September 1993	September 1994
<b>SHORT-TERM CARAVAN PARKS</b>									
Establishments	No.	445	436	442	441	441	438	..	..
Capacity									
On-site vans	No.	2,232	2,084	2,046	2,055	2,056	2,063	..	..
Other powered sites	No.	36,529	36,064	36,246	36,452	36,475	36,395	..	..
Unpowered sites	No.	13,349	13,104	13,064	13,261	13,172	13,066	..	..
Cabins, etc.	No.	2,241	2,170	2,245	2,284	2,268	2,307	..	..
<i>Total capacity</i>	<i>No.</i>	<i>54,351</i>	<i>53,422</i>	<i>53,601</i>	<i>54,052</i>	<i>53,971</i>	<i>53,831</i>	..	..
Sites occupied by long-term guests	No.	1,999	1,814	1,854	1,849	1,859	1,708	..	..
Other sites permanently reserved (a)	No.	14,002	13,847	14,425	14,976	14,518	14,447	..	..
Employment (persons)	No.	1,351	1,321	1,487	1,433	1,328	1,325	..	..
Site nights occupied (a)	'000	1,806.3	1,665.5	1,899.3	2,204.2	1,844.7	1,718.9	7,529.4	7,667.2
Site occupancy rate (a)	per cent	36.5	34.0	38.7	45.3	37.6	34.9	38.4	39.1
Takings from accommodation	\$'000	10,038	9,914	13,469	17,183	10,268	10,602	49,370	51,522
<b>LONG-TERM CARAVAN PARKS</b>									
Establishments	No.	147	157	159	158	158	164	..	..
Capacity									
On-site vans	No.	1,806	1,924	1,913	1,940	1,829	1,858	..	..
Other powered sites	No.	8,127	8,735	8,689	8,669	8,568	8,567	..	..
Unpowered sites	No.	1,781	2,044	2,066	2,066	2,155	2,299	..	..
Cabins, etc.	No.	770	881	908	920	1,107	1,138	..	..
<i>Total capacity</i>	<i>No.</i>	<i>12,484</i>	<i>13,584</i>	<i>13,576</i>	<i>13,595</i>	<i>13,659</i>	<i>13,862</i>	..	..
Sites occupied by long-term guests	No.	4,359	4,591	4,637	4,726	4,603	4,749	..	..
Other sites permanently reserved (a)	No.	436	390	405	385	367	357	..	..
Employment (persons)	No.	435	491	510	484	484	510	..	..
Site nights occupied (a)	'000	517.3	538.5	550.4	578.1	549.6	551.4	2,149.4	2,229.5
Site occupancy rate (a)	per cent	45.5	43.1	44.1	47.2	44.2	43.2	45.8	44.7
Takings from accommodation	\$'000	5,203	5,387	5,628	6,116	5,715	5,635	21,408	23,093
<b>TOTAL CARAVAN PARKS</b>									
Establishments	No.	592	593	601	599	599	602	..	..
Capacity									
On-site vans	No.	4,038	4,008	3,959	3,995	3,885	3,921	..	..
Other powered sites	No.	44,656	44,799	44,935	45,121	45,043	44,962	..	..
Unpowered sites	No.	15,130	15,148	15,130	15,327	15,327	15,365	..	..
Cabins, etc.	No.	3,011	3,051	3,153	3,204	3,375	3,445	..	..
<i>Total capacity</i>	<i>No.</i>	<i>66,835</i>	<i>67,006</i>	<i>67,177</i>	<i>67,647</i>	<i>67,630</i>	<i>67,693</i>	..	..
Sites occupied by long-term guests	No.	6,358	6,405	6,491	6,575	6,462	6,457	..	..
Other sites permanently reserved (a)	No.	14,438	14,237	14,830	15,361	14,885	14,804	..	..
Employment (persons)	No.	1,786	1,812	1,997	1,917	1,812	1,835	..	..
Site nights occupied (a)	'000	2,323.6	2,204.0	2,449.8	2,782.3	2,394.3	2,270.3	9,678.8	9,896.7
Site occupancy rate (a)	per cent	38.2	35.8	39.8	45.7	39.0	36.6	39.8	40.3
Takings from accommodation	\$'000	15,241	15,301	19,096	23,299	15,983	16,238	70,778	74,615

(a) See Explanatory Notes 11 and 14.

TABLE 3 — SUMMARY OF HOLIDAY FLATS, UNITS AND HOUSES, VICTORIA

Particulars	Unit	Quarter ended				Year ended			
		June 1993	September 1993	December 1993	March 1994	June 1994	September 1994	September 1993	September 1994
Letting entities	No.	185	184	204	210	197	197	..	..
Flats, units and houses									
Single bedroom	No.	964	985	1,032	1,013	971	1,016	..	..
Multiple bedroom	No.	2,039	2,002	2,314	2,558	2,054	2,103	..	..
Total flats, units and houses	No.	3,003	2,987	3,346	3,571	3,025	3,119	..	..
Bed spaces	No.	13,236	13,160	15,205	16,120	13,151	13,391	..	..
Employment (persons) (a)	No.	618	625	676	702	702	732	..	..
Unit nights occupied	'000	113.2	108.7	118.8	154.1	117.2	127.2	483.4	517.3
Unit occupancy rate	per cent	41.4	39.6	38.9	49.0	42.6	44.4	42.1	43.8
Unit lettings	'000	30.0	27.4	32.0	36.6	29.7	30.2	118.9	128.5
Average length of stay	days	3.8	4.0	3.7	4.2	3.9	4.2	4.1	4.0
Takings from accommodation	\$'000	8,184	8,648	8,884	11,386	9,009	11,238	36,072	40,517

(a) Employment numbers exclude real estate agents and their employees.

TABLE 4 — SUMMARY OF VISITOR HOSTELS, VICTORIA

Particulars	Unit	Quarter ended				Year ended			
		June 1993	September 1993	December 1993	March 1994	June 1994	September 1994	September 1993	September 1994
Establishments	No.	40	43	45	49	49	52	..	..
Bed spaces	No.	2,509	2,531	2,576	2,789	2,797	2,927	..	..
Employment (persons)	No.	137	140	150	160	145	157	..	..
Guest nights	'000	68.9	67.7	92.7	117.7	77.7	82.4	338.1	370.5
Bed occupancy rate	per cent	30.2	29.1	39.1	46.9	30.5	30.9	35.7	36.7
Guest arrivals	'000	27.1	26.9	36.7	47.1	32.7	34.1	126.3	150.6
Average length of stay	days	2.5	2.5	2.5	2.5	2.4	2.4	2.7	2.5
Takings from accommodation	\$'000	894	914	1,144	1,529	995	1,092	4,182	4,760

TABLE 5 — HOTELS, MOTELS AND GUEST HOUSES WITH FACILITIES BY STAR GRADING,  
MELBOURNE CITY, MELBOURNE STATISTICAL DIVISION AND VICTORIA (a)

Particulars	Melbourne City					Melbourne Statistical Division					Total
	Star grading					Star grading					
	Ungraded and 1	2	3	4 and 5	Total	Ungraded and 1	2	3	4	5	
<b>ESTABLISHMENTS, CAPACITY AND EMPLOYMENT</b>											
<i>September quarter 1993—</i>											
Establishments	5	8	23	20	56	23	70	103	46	7	249
Guest rooms	555	750	2,127	4,868	8,300	823	1,985	4,662	5,203	2,412	15,085
Bed spaces	1,217	1,484	5,743	10,446	18,890	2,015	4,872	12,894	12,125	5,044	36,950
Employment (persons)	134	219	732	4,171	5,256	471	1,316	1,820	3,408	2,955	9,970
<i>September quarter 1994—</i>											
Establishments	4	10	21	21	56	16	74	93	47	8	238
Guest rooms	322	1,009	1,914	5,251	8,496	574	2,213	4,160	5,124	2,650	14,721
Bed spaces	819	1,972	5,132	11,462	19,385	1,501	5,335	11,463	12,322	5,510	36,131
Employment (persons)	101	240	625	4,658	5,624	328	1,357	1,552	3,348	3,170	9,755
<b>ROOM NIGHTS OCCUPIED ('000)</b>											
<i>September quarter 1993</i>	17.0	38.1	99.2	250.3	404.6	24.7	76.9	211.0	268.1	117.0	697.9
<i>1994—</i>											
July	3.8	15.1	38.1	103.4	160.4	5.8	28.7	72.6	103.0	47.3	257.4
August	3.4	13.8	35.2	106.9	159.3	5.7	26.0	69.6	104.9	50.4	256.6
September	5.0	17.6	40.3	112.7	175.6	7.0	32.9	77.3	107.8	53.9	278.9
<i>September quarter 1994</i>	12.2	46.5	113.5	323.0	495.3	18.5	87.6	219.5	315.7	151.6	792.8
<b>ROOM OCCUPANCY RATES (per cent)</b>											
<i>September quarter 1993</i>	33.3	55.2	51.2	55.9	53.1	32.7	42.2	49.6	56.0	52.7	50.4
<i>1994—</i>											
July	38.4	48.2	64.1	63.5	60.9	32.6	41.9	56.3	64.9	57.5	56.4
August	34.1	44.2	59.3	65.7	60.5	31.8	38.5	54.1	66.0	61.3	56.4
September	51.6	58.0	70.1	71.6	68.9	40.7	49.6	61.9	70.1	67.8	63.2
<i>September quarter 1994</i>	41.3	50.1	64.5	66.9	63.4	35.0	43.3	57.4	67.0	62.2	58.6
<b>GUEST NIGHTS ('000)</b>											
<i>September quarter 1993</i>	24.6	61.9	169.8	373.4	629.7	36.4	124.3	342.6	399.1	167.0	1,069.5
<i>1994—</i>											
July	7.1	24.5	65.8	156.5	253.9	11.2	47.2	122.2	155.5	68.5	404.6
August	6.1	21.1	58.2	157.2	242.5	9.9	40.1	112.1	153.0	71.0	386.1
September	8.9	27.9	69.7	168.6	275.1	12.6	53.6	130.0	161.6	78.4	436.2
<i>September quarter 1994</i>	22.1	73.4	193.7	482.2	771.4	33.7	140.9	364.4	470.1	217.8	1,226.9
<b>BED OCCUPANCY RATES (per cent)</b>											
<i>September quarter 1993</i>	22.0	45.3	32.5	38.9	36.4	19.7	27.8	29.1	35.8	36.0	31.6
<i>1994—</i>											
July	28.0	40.0	41.4	44.0	42.2	24.1	28.6	34.4	40.7	40.1	36.1
August	23.9	34.5	36.6	44.2	40.4	21.3	24.6	31.6	40.1	41.6	34.6
September	36.4	47.2	45.3	49.0	47.3	28.0	33.5	37.8	43.7	47.4	40.2
<i>September quarter 1994</i>	29.4	40.5	41.0	45.7	43.3	24.4	28.9	34.6	41.5	43.0	36.9
<b>GUEST ARRIVALS ('000)</b>											
<i>September quarter 1993</i>	12.4	26.6	78.6	162.7	280.2	18.2	64.7	170.0	176.5	83.5	513.0
<i>1994—</i>											
July	4.1	9.4	29.2	66.2	108.9	6.0	22.7	58.6	67.6	31.1	186.1
August	3.8	8.2	26.5	67.0	105.5	5.5	19.3	54.7	67.6	31.8	179.0
September	5.7	10.0	33.5	75.3	124.6	7.7	24.0	65.7	75.0	34.9	207.3
<i>September quarter 1994</i>	13.5	27.6	89.2	208.6	339.0	19.2	66.1	179.0	210.3	97.8	572.4
<b>AVERAGE LENGTH OF STAY (days)</b>											
<i>September quarter 1993</i>	2.0	2.3	2.2	2.3	2.2	2.0	1.9	2.0	2.3	2.0	2.1
<i>September quarter 1994</i>	1.6	2.7	2.2	2.3	2.3	1.8	2.1	2.0	2.2	2.2	2.1
<b>TAKINGS FROM ACCOMMODATION (\$'000)</b>											
<i>September quarter 1993</i>	863	2,217	7,970	31,421	42,471	1,327	4,196	16,077	29,338	16,739	67,677
<i>1994—</i>											
July	246	795	2,845	12,890	16,776	447	1,529	5,406	11,085	6,521	24,988
August	223	716	2,684	13,395	17,019	425	1,388	5,218	11,815	6,939	25,784
September	332	933	3,168	14,844	19,278	530	1,784	5,943	12,639	7,699	28,597
<i>September quarter 1994</i>	802	2,444	8,697	41,130	53,072	1,401	4,701	16,568	35,539	21,159	79,369

TABLE 5 — HOTELS, MOTELS AND GUEST HOUSES WITH FACILITIES BY STAR GRADING,  
MELBOURNE CITY, MELBOURNE STATISTICAL DIVISION AND VICTORIA (a) — continued

Particulars	Victoria						Total
	Star grading						
	1	2	3	4	5	Ungraded	
ESTABLISHMENTS, CAPACITY AND EMPLOYMENT							
<i>September quarter 1993</i>							
Establishments	26	379	447	64	7	120	1,043
Guest rooms	271	7,009	12,170	6,054	2,412	2,400	30,316
Bed spaces	691	19,943	36,234	14,843	5,044	6,815	83,570
Employment (persons)	283	3,270	4,371	3,887	2,955	1,197	15,963
<i>September quarter 1994</i>							
Establishments	19	386	455	72	8	63	1,003
Guest rooms	243	7,404	12,002	6,056	2,650	1,325	29,680
Bed spaces	642	21,057	35,690	15,198	5,510	3,891	81,988
Employment (persons)	201	3,449	4,324	3,929	3,170	770	15,843
ROOM NIGHTS OCCUPIED ('000)							
<i>September quarter 1993</i>	5.1	211.5	488.2	308.0	117.0	73.5	1,203.4
<i>1994</i>							
July	1.1	75.7	169.1	119.2	47.3	15.5	428.0
August	1.2	72.0	162.6	119.8	50.4	15.9	421.9
September	1.2	84.9	183.8	125.0	53.9	16.8	465.6
<i>September quarter 1994</i>	3.5	232.7	515.5	364.0	151.6	48.2	1,315.4
ROOM OCCUPANCY RATES (per cent)							
<i>September quarter 1993</i>	20.4	32.9	43.8	55.3	52.7	33.3	43.2
<i>1994</i>							
July	14.5	33.0	45.5	63.5	57.5	37.7	46.5
August	15.9	31.5	43.7	63.8	61.3	38.8	45.9
September	17.1	38.2	51.0	68.8	67.8	42.4	52.3
<i>September quarter 1994</i>	15.8	34.2	46.7	65.3	62.2	39.6	48.2
GUEST NIGHTS ('000)							
<i>September quarter 1993</i>	7.2	376.0	842.9	459.9	167.0	153.8	2,006.8
<i>1994</i>							
July	1.5	138.4	301.8	181.8	68.5	34.0	726.0
August	1.6	126.9	269.0	174.4	71.0	34.6	677.5
September	1.8	152.9	323.5	187.9	78.4	35.5	780.1
<i>September quarter 1994</i>	4.9	418.2	894.3	544.2	217.8	104.1	2,183.6
BED OCCUPANCY RATES (per cent)							
<i>September quarter 1993</i>	11.4	20.5	25.4	33.7	36.0	24.6	26.2
<i>1994</i>							
July	7.6	21.2	27.3	38.6	40.1	28.2	28.6
August	8.0	19.5	24.3	37.0	41.6	28.7	26.7
September	9.4	24.2	30.2	41.2	47.4	30.5	31.7
<i>September quarter 1994</i>	8.3	21.6	27.2	38.9	43.0	29.1	29.0
GUEST ARRIVALS ('000)							
<i>September quarter 1993</i>	4.6	228.5	512.0	217.0	83.5	60.4	1,106.0
<i>1994</i>							
July	1.1	80.6	178.5	84.7	31.1	13.5	389.5
August	1.1	72.4	159.4	82.2	31.8	14.0	360.8
September	1.2	85.6	194.8	92.6	34.9	15.4	424.4
<i>September quarter 1994</i>	3.3	238.6	532.7	259.5	97.8	42.9	1,174.7
AVERAGE LENGTH OF STAY (days)							
<i>September quarter 1993</i>	1.6	1.6	1.6	2.1	2.0	2.5	1.8
<i>September quarter 1994</i>	1.5	1.8	1.7	2.1	2.2	2.4	1.9
TAKINGS FROM ACCOMMODATION (\$'000)							
<i>September quarter 1993</i>	174	10,957	32,723	32,611	16,739	7,431	100,636
<i>1994</i>							
July	37	4,131	11,669	12,476	6,521	1,489	36,323
August	33	4,021	11,069	13,013	6,939	1,756	36,831
September	50	4,611	12,593	13,968	7,699	1,592	40,515
<i>September quarter 1994</i>	120	12,763	35,331	39,457	21,159	4,838	113,668

(a) From December quarter 1993, establishments with fewer than 5 rooms have been formally excluded from the scope of this collection. See Explanatory Note 2 (page 26).



TABLE 6 — HOTELS, MOTELS AND GUEST HOUSES WITH FACILITIES BY STATISTICAL DIVISION,  
VICTORIA (a)

Particulars	Melbourne (SD)			Barwon (SD)			Western District (SD)			Central Highlands (SD)		
	Licensed hotels	Motels etc.	Total	Licensed hotels	Motels etc.	Total	Licensed hotels	Motels etc.	Total	Licensed hotels	Motels etc.	Total
ESTABLISHMENTS, CAPACITY AND EMPLOYMENT												
<i>September quarter 1993</i>												
Establishments	71	178	249	19	61	80	15	63	78	11	47	58
Guest rooms	7,469	7,616	15,085	386	1,219	1,605	219	1,104	1,323	202	959	1,161
Bed spaces	16,673	20,277	36,950	1,152	3,643	4,795	611	3,203	3,814	525	3,018	3,543
Employment (persons)	7,053	2,917	9,970	471	392	863	246	390	636	108	361	469
<i>September quarter 1994—</i>												
Establishments	68	170	238	16	62	78	13	62	75	11	46	57
Guest rooms	7,760	6,961	14,721	377	1,251	1,628	219	1,057	1,276	184	971	1,155
Bed spaces	17,833	18,298	36,131	1,135	3,738	4,873	602	3,087	3,689	526	3,035	3,561
Employment (persons)	7,371	2,384	9,755	458	434	892	247	376	623	177	358	535
ROOM NIGHTS OCCUPIED ('000)												
<i>September quarter 1993</i>	354.9	343.0	697.9	12.2	38.4	50.6	6.1	37.5	43.6	8.0	39.1	47.1
<i>1994—</i>												
July	145.4	112.0	257.4	4.1	14.2	18.3	1.6	11.3	12.9	3.0	13.3	16.4
August	148.4	108.2	256.6	4.1	12.0	16.1	1.6	10.9	12.5	2.9	12.1	14.9
September	158.6	120.3	278.9	4.8	15.6	20.4	1.8	12.9	14.7	3.1	13.8	16.9
<i>September quarter 1994</i>	452.4	340.4	792.8	13.0	41.9	54.9	4.9	35.2	40.1	9.0	39.2	48.1
ROOM OCCUPANCY RATES (per cent)												
<i>September quarter 1993</i>	51.8	49.1	50.4	34.4	34.3	34.3	30.2	36.9	35.8	43.0	44.4	44.1
<i>1994—</i>												
July	60.4	52.0	56.4	35.5	36.6	36.3	23.5	34.6	32.7	53.1	44.3	45.7
August	61.9	50.2	56.4	34.9	31.0	31.9	23.0	33.4	31.6	50.2	40.1	41.7
September	68.1	57.6	63.2	42.3	41.7	41.8	27.3	40.6	38.3	55.6	47.3	48.7
<i>September quarter 1994</i>	63.4	53.2	58.6	37.5	36.4	36.6	24.6	36.2	34.2	53.0	43.9	45.3
GUEST NIGHTS ('000)												
<i>September quarter 1993</i>	527.9	541.6	1,069.5	16.0	66.5	82.4	9.4	65.2	74.6	14.3	75.8	90.1
<i>1994—</i>												
July	222.2	182.4	404.6	6.8	24.4	31.3	2.4	20.0	22.4	5.7	26.6	32.2
August	219.0	167.1	386.1	6.6	18.7	25.3	2.1	17.5	19.6	4.6	21.8	26.3
September	239.3	197.0	436.2	7.5	25.8	33.2	2.6	22.1	24.7	5.5	26.9	32.4
<i>September quarter 1994</i>	680.5	546.4	1,226.9	20.9	68.9	89.9	7.1	59.6	66.7	15.8	75.2	90.9
BED OCCUPANCY RATES (per cent)												
<i>September quarter 1993</i>	34.5	29.1	31.6	15.1	19.8	18.7	16.8	22.1	21.3	29.6	27.3	27.6
<i>1994—</i>												
July	40.2	32.2	36.1	19.4	21.1	20.7	12.7	20.9	19.6	34.8	28.2	29.2
August	39.8	29.5	34.6	18.8	16.2	16.8	11.3	18.3	17.2	28.0	23.1	23.9
September	44.7	35.9	40.2	22.0	23.0	22.7	14.6	23.8	22.3	35.0	29.5	30.3
<i>September quarter 1994</i>	41.5	32.5	36.9	20.0	20.0	20.0	12.9	21.0	19.7	32.6	26.9	27.8
GUEST ARRIVALS ('000)												
<i>September quarter 1993</i>	246.9	266.1	513.0	7.8	43.6	51.4	5.8	45.6	51.3	9.2	52.6	61.8
<i>1994—</i>												
July	99.9	86.2	186.1	3.0	16.6	19.6	1.7	14.6	16.3	3.4	18.8	22.2
August	99.8	79.3	179.0	2.7	12.7	15.4	1.6	12.4	14.0	3.2	15.1	18.3
September	112.8	94.5	207.3	3.1	17.6	20.7	2.0	16.3	18.2	3.8	19.1	22.9
<i>September quarter 1994</i>	312.5	259.9	572.4	8.8	46.9	55.6	5.2	43.3	48.5	10.4	53.0	63.4
AVERAGE LENGTH OF STAY (days)												
<i>September quarter 1993</i>	2.1	2.0	2.1	2.1	1.5	1.6	1.6	1.4	1.5	1.6	1.4	1.5
<i>September quarter 1994</i>	2.2	2.1	2.1	2.4	1.5	1.6	1.4	1.4	1.4	1.5	1.4	1.4
TAKINGS FROM ACCOMMODATION (\$'000)												
<i>September quarter 1993</i>	41,468	26,210	67,677	939	2,506	3,446	290	2,172	2,462	564	2,529	3,093
<i>1994—</i>												
July	16,513	8,475	24,988	378	919	1,298	74	693	767	216	934	1,150
August	17,098	8,685	25,784	342	767	1,109	73	645	718	186	777	963
September	19,015	9,582	28,597	320	1,015	1,335	85	775	860	217	903	1,120
<i>September quarter 1994</i>	52,626	26,742	79,369	1,040	2,701	3,742	232	2,113	2,345	618	2,614	3,233

**TABLE 6—HOTELS, MOTELS AND GUEST HOUSES WITH FACILITIES BY STATISTICAL DIVISION,  
VICTORIA (a)—continued**

Particulars	Wimmera (SD)	Mallee (SD)	Loddon-Campaspe (SD)		Goulburn (SD)			
	Total	Total	Licensed hotels	Motels etc.	Total	Licensed hotels	Motels etc.	Total
<b>ESTABLISHMENTS, CAPACITY AND EMPLOYMENT</b>								
<i>September quarter 1993—</i>								
Establishments	52	68	11	74	85	29	91	120
Guest rooms	863	1,569	129	1,365	1,494	604	1,702	2,306
Bed spaces	2,606	4,776	346	4,218	4,564	1,877	5,543	7,420
Employment (persons)	236	539	112	428	540	401	487	888
<i>September quarter 1994—</i>								
Establishments	50	65	11	72	83	22	91	113
Guest rooms	864	1,514	130	1,372	1,502	502	1,709	2,211
Bed spaces	2,616	4,688	359	4,201	4,560	1,620	5,478	7,098
Employment (persons)	239	528	108	454	562	370	564	934
<b>ROOM NIGHTS OCCUPIED ('000)</b>								
<i>September quarter 1993</i>	28.6	61.9	3.1	54.1	57.3	17.3	51.6	68.9
<i>1994—</i>								
July	9.4	19.9	1.1	18.7	19.8	5.3	19.3	24.6
August	9.4	19.9	1.0	16.6	17.6	6.1	20.4	26.5
September	11.5	23.0	1.2	19.7	21.0	5.8	21.6	27.4
<i>September quarter 1994</i>	30.2	62.8	3.3	55.1	58.4	17.2	61.2	78.5
<b>ROOM OCCUPANCY RATES (per cent)</b>								
<i>September quarter 1993</i>	36.0	42.9	26.5	43.1	41.7	31.1	33.2	32.6
<i>1994—</i>								
July	35.0	42.5	27.4	43.9	42.5	34.2	36.4	35.9
August	35.0	42.4	25.1	39.1	37.9	38.9	38.5	38.6
September	44.2	50.6	31.5	48.0	46.5	38.8	42.0	41.3
<i>September quarter 1994</i>	38.0	45.1	28.0	43.6	42.3	37.3	39.0	38.6
<b>GUEST NIGHTS ('000)</b>								
<i>September quarter 1993</i>	50.4	109.7	4.9	98.0	102.9	30.3	103.5	133.9
<i>1994—</i>								
July	16.4	35.5	1.6	34.4	36.0	9.7	38.2	47.9
August	14.5	32.1	1.4	27.4	28.8	10.7	40.7	51.4
September	20.1	40.1	1.9	35.4	37.3	10.1	41.9	52.1
<i>September quarter 1994</i>	51.0	107.7	4.9	97.2	102.2	30.5	120.8	151.3
<b>BED OCCUPANCY RATES (per cent)</b>								
<i>September quarter 1993</i>	21.0	25.0	15.5	25.3	24.5	17.6	20.4	19.7
<i>1994—</i>								
July	20.2	24.4	14.6	26.4	25.5	19.3	22.5	21.8
August	17.9	22.1	12.5	21.1	20.4	21.3	24.0	23.4
September	25.6	28.5	17.8	28.1	27.3	20.9	25.5	24.5
<i>September quarter 1994</i>	21.2	25.0	14.9	25.2	24.4	20.5	24.0	23.2
<b>GUEST ARRIVALS ('000)</b>								
<i>September quarter 1993</i>	36.3	73.4	4.0	67.9	72.0	14.2	65.5	79.8
<i>1994—</i>								
July	11.8	24.1	1.4	24.7	26.1	4.7	22.2	26.9
August	10.3	21.4	1.1	20.3	21.4	5.7	23.5	29.1
September	13.8	26.8	1.5	25.7	27.1	5.2	23.1	28.3
<i>September quarter 1994</i>	35.8	72.3	4.0	70.7	74.7	15.6	68.8	84.4
<b>AVERAGE LENGTH OF STAY (days)</b>								
<i>September quarter 1993</i>	1.4	1.5	1.2	1.4	1.4	2.1	1.6	1.7
<i>September quarter 1994</i>	1.4	1.5	1.2	1.4	1.4	2.0	1.8	1.8
<b>TAKINGS FROM ACCOMMODATION (\$'000)</b>								
<i>September quarter 1993</i>	1,556	3,087	157	3,243	3,400	1,534	3,479	5,012
<i>1994—</i>								
July	521	1,046	57	1,197	1,254	450	1,385	1,835
August	506	975	47	1,026	1,073	542	1,521	2,063
September	650	1,156	67	1,204	1,271	521	1,508	2,029
<i>September quarter 1994</i>	1,677	3,178	171	3,427	3,598	1,513	4,414	5,927

TABLE 6 — HOTELS, MOTELS AND GUEST HOUSES WITH FACILITIES BY STATISTICAL DIVISION,  
VICTORIA (a)—continued

Particulars	Ovens-Murray (SD)			East Gippsland (SD)			Gippsland (SD)			Victoria		
	Licensed hotels	Motels etc.	Total	Licensed hotels	Motels etc.	Total	Licensed hotels	Motels etc.	Total	Licensed hotels	Motels etc.	Total
ESTABLISHMENTS, CAPACITY AND EMPLOYMENT												
<i>September quarter 1993</i>												
Establishments	18	91	109	8	62	70	18	56	74	212	831	1,043
Guest rooms	302	1,851	2,153	133	1,170	1,303	261	1,193	1,454	9,934	20,382	30,316
Bed spaces	941	5,982	6,923	389	3,555	3,944	721	3,514	4,235	23,764	59,806	83,570
Employment (persons)	197	543	740	70	350	420	315	347	662	9,138	6,825	15,963
<i>September quarter 1994—</i>												
Establishments	15	89	104	8	61	69	16	55	71	189	814	1,003
Guest rooms	283	1,800	2,083	125	1,154	1,279	239	1,208	1,447	10,010	19,670	29,680
Bed spaces	861	5,817	6,678	406	3,477	3,883	670	3,541	4,211	24,462	57,526	81,988
Employment (persons)	207	551	758	79	354	433	241	343	584	9,431	6,412	15,843
ROOM NIGHTS OCCUPIED ('000)												
<i>September quarter 1993</i>	11.2	61.5	72.7	2.9	34.1	37.0	5.6	32.0	37.7	428.5	774.9	1,203.4
<i>1994—</i>												
July	3.2	20.2	23.4	1.0	11.7	12.8	2.0	11.1	13.1	169.4	258.5	428.0
August	3.5	20.6	24.0	1.1	10.4	11.5	2.2	10.7	12.8	173.4	248.4	421.9
September	3.1	22.1	25.3	1.1	13.0	14.1	2.1	10.5	12.6	184.7	280.9	465.6
<i>September quarter 1994</i>	9.8	62.9	72.7	3.2	35.2	38.4	6.3	32.2	38.4	527.6	787.9	1,315.4
ROOM OCCUPANCY RATES (per cent)												
<i>September quarter 1993</i>	40.3	36.2	36.8	23.5	31.8	30.9	23.5	29.2	28.2	47.0	41.4	43.2
<i>1994—</i>												
July	36.2	36.3	36.3	26.5	33.0	32.4	27.3	29.5	29.2	54.6	42.4	46.5
August	39.7	36.8	37.2	28.3	29.3	29.2	29.1	28.4	28.6	56.0	40.8	45.9
September	36.8	41.0	40.4	29.1	37.8	37.0	29.3	28.8	28.9	61.5	47.6	52.3
<i>September quarter 1994</i>	37.6	38.0	37.9	28.0	33.3	32.8	28.6	28.9	28.9	57.3	43.6	48.2
GUEST NIGHTS ('000)												
<i>September quarter 1993</i>	26.2	138.6	164.8	6.1	60.7	66.8	8.4	53.4	61.7	654.6	1,352.3	2,006.8
<i>1994—</i>												
July	7.6	45.8	53.4	2.5	21.6	24.1	3.0	19.2	22.2	265.7	460.3	726.0
August	8.9	45.6	54.5	2.4	17.0	19.4	2.9	16.5	19.4	262.5	415.0	677.5
September	7.2	49.3	56.5	2.5	23.9	26.4	3.3	17.8	21.1	284.9	495.2	780.1
<i>September quarter 1994</i>	23.7	140.7	164.4	7.4	62.5	69.9	9.2	53.5	62.7	813.1	1,370.5	2,183.6
BED OCCUPANCY RATES (per cent)												
<i>September quarter 1993</i>	30.2	25.2	25.9	17.0	18.6	18.5	12.6	16.5	15.9	30.0	24.6	26.2
<i>1994</i>												
July	28.5	25.4	25.8	19.7	20.2	20.2	14.4	17.5	17.0	35.0	25.8	28.6
August	33.5	25.3	26.3	19.2	15.8	16.2	14.0	15.0	14.8	34.7	23.3	26.7
September	27.7	28.2	28.2	20.7	23.0	22.7	16.3	16.8	16.7	38.8	28.7	31.7
<i>September quarter 1994</i>	29.9	26.3	26.8	19.9	19.6	19.7	14.9	16.4	16.2	36.2	25.9	29.0
GUEST ARRIVALS ('000)												
<i>September quarter 1993</i>	10.6	66.0	76.6	3.6	42.6	46.2	5.5	38.8	44.3	314.2	791.9	1,106.0
<i>1994—</i>												
July	3.1	22.3	25.5	1.5	14.5	16.0	1.8	13.2	15.0	122.9	266.6	389.5
August	3.5	21.3	24.7	1.5	11.9	13.4	1.7	12.2	13.8	123.0	237.8	360.8
September	2.8	23.6	26.4	1.5	16.3	17.9	1.8	13.2	14.9	137.4	287.0	424.4
<i>September quarter 1994</i>	9.4	67.1	76.6	4.5	42.7	47.2	5.2	38.6	43.8	383.3	791.4	1,174.7
AVERAGE LENGTH OF STAY (days)												
<i>September quarter 1993</i>	2.5	2.1	2.2	1.7	1.4	1.4	1.5	1.4	1.4	2.1	1.7	1.8
<i>September quarter 1994</i>	2.5	2.1	2.1	1.6	1.5	1.5	1.8	1.4	1.4	2.1	1.7	1.9
TAKINGS FROM ACCOMMODATION (\$'000)												
<i>September quarter 1993</i>	1,086	5,900	6,986	148	1,857	2,005	203	1,709	1,912	46,741	53,895	100,636
<i>1994—</i>												
July	412	1,640	2,051	62	674	735	68	609	677	18,359	17,964	36,323
August	446	1,917	2,363	65	571	636	65	577	642	18,992	17,838	36,831
September	302	1,747	2,048	63	735	798	67	583	650	20,808	19,707	40,515
<i>September quarter 1994</i>	1,159	5,303	6,463	190	1,980	2,169	201	1,768	1,969	58,159	55,510	113,668

(a) From December quarter 1993, establishments with fewer than 5 rooms have been formally excluded from the scope of this collection. See Explanatory Note 2 (page 26).

TABLE 7 — HOTELS, MOTELS AND GUEST HOUSES WITH FACILITIES: STATISTICAL DIVISIONS

Statistical Divisions and selected Statistical Local Areas	Establish- ments	Guest rooms	Bed spaces	Employ- ment (persons)	Room nights occupied				Room occupancy rates (per cent)			
					July	Aug.	Sept.	Sept. qtr	July	Aug.	Sept.	Sept. qtr
					Box Hill (C)	3	86	213	30	1,413	1,474	1,625
Broadmeadows (C)	7	192	510	156	3,449	3,449	3,471	10,369	57.9	57.9	60.3	58.7
Cranbourne (S)	5	98	330	15	1,139	1,161	1,061	3,361	37.5	38.2	36.1	37.3
Croydon (C)	4	90	280	177	730	602	832	2,164	26.2	21.6	30.8	26.1
Doncaster & Templestowe (C)	4	90	248	131	1,434	1,230	1,204	3,868	51.4	44.1	44.6	46.7
Essendon (C)	3	75	204	32	1,403	1,207	1,576	4,186	60.3	51.9	70.0	60.7
Flinders (S)	17	266	721	202	2,205	2,131	2,487	6,823	27.1	26.2	31.2	28.1
Footscray (C)	3	112	305	20	1,496	1,406	1,655	4,557	43.1	40.5	49.3	44.2
Frankston (C)	5	228	720	106	2,634	2,880	3,914	9,428	37.3	40.7	57.2	44.9
Hastings (S)	4	84	253	49	919	1,138	1,112	3,169	35.3	43.7	44.1	41.0
Healesville (S)	8	91	337	60	802	600	810	2,212	29.4	23.3	29.7	27.6
Kew (C)	3	105	253	52	1,482	1,983	1,741	5,206	45.5	60.9	55.3	53.9
Knox (C)	3	132	357	46	2,143	2,244	2,094	6,481	52.4	54.8	52.9	53.4
Lillydale (S)	6	174	400	144	1,374	1,685	1,416	4,475	25.5	31.2	27.1	28.0
Melbourne (C) — Inner	30	6,030	12,969	4,134	112,823	112,960	123,893	349,676	60.4	60.4	68.5	63.0
— Remainder	26	2,466	6,416	1,490	47,553	46,381	51,658	145,592	62.2	60.7	69.8	64.2
Mornington (S)	5	69	194	64	691	622	624	1,937	32.3	29.1	30.1	30.5
Nunawading (C)	5	154	374	193	2,764	2,890	2,934	8,588	57.9	60.5	63.5	60.6
Oakleigh (C)	5	145	416	32	2,361	2,175	2,399	6,935	52.5	48.4	55.1	52.0
Prahran (C)	7	302	785	187	5,785	6,288	5,973	18,046	61.8	67.2	65.9	65.0
Ringwood (C)	3	76	194	30	998	1,020	1,136	3,154	42.4	43.3	49.8	45.1
St Kilda (C)	13	612	1,369	211	10,293	9,429	10,452	30,174	54.3	49.7	56.9	53.6
South Melbourne (C)	8	1,141	2,987	830	23,535	23,317	24,592	71,444	66.5	65.9	71.8	68.1
Springvale (C)	6	153	466	253	2,519	2,426	2,749	7,694	53.1	51.1	59.9	54.7
Upper Yarra (S) — Pt A	4	97	241	23	180	398	312	890	6.0	18.9	10.7	11.1
Waverley (C)	5	149	370	227	2,602	2,714	2,584	7,900	56.3	58.8	57.8	57.6
Werribee (C)	5	128	374	82	1,440	1,055	1,408	3,903	36.3	26.6	36.7	33.1
Balance	41	1,376	3,845	779	21,205	21,689	23,195	66,089	49.7	50.8	56.2	52.2
Melbourne (SD)	238	14,721	36,131	9,755	257,372	256,554	278,907	792,833	56.4	56.4	63.2	58.6
Colac (C)	5	109	314	62	1,073	1,003	965	3,041	31.8	29.7	29.5	30.3
Greater Geelong City Part A (SSD)												
Corio — Inner	3	47	150	24	740	506	746	1,992	50.8	34.7	52.9	46.1
Geelong	10	357	982	183	4,549	4,778	5,243	14,570	41.1	43.2	49.0	44.4
South Barwon — Inner	8	128	409	44	1,388	1,324	1,405	4,117	35.0	33.4	36.6	35.0
Balance	5	124	357	59	1,727	1,639	1,779	5,145	44.9	42.6	47.8	45.1
Total	26	656	1,898	310	8,404	8,247	9,173	25,824	41.3	40.6	46.6	42.8
Greater Geelong (C) — Pts B and C	8	105	368	92	1,023	1,018	1,103	3,144	31.4	31.3	35.0	32.5
Otway (S)	14	207	598	83	1,993	1,310	2,343	5,646	31.1	20.4	37.7	29.6
Surf Coast (S) — Pts A and B	18	426	1,366	253	4,550	3,352	5,420	13,322	34.5	25.4	42.4	34.0
Balance	7	125	329	92	1,289	1,184	1,414	3,887	33.3	30.6	37.7	33.8
Barwon (SD)	78	1,628	4,873	892	18,332	16,114	20,418	54,864	36.3	31.9	41.8	36.6
Camperdown (T)	3	49	139	14	693	607	687	1,987	45.6	40.0	46.7	44.1
Hamilton (C)	10	200	573	103	2,080	2,216	2,310	6,606	33.5	35.7	38.5	35.9
Hampden (S)	4	36	91	14	198	150	180	528	17.7	13.4	16.7	15.9
Heytesbury (S)	6	75	226	54	910	671	861	2,442	39.1	28.9	38.3	35.4
Heywood (S)	5	57	166	12	402	277	456	1,135	22.8	15.7	26.7	21.6
Port Fairy (B)	7	86	251	51	815	609	852	2,276	30.6	22.8	33.0	28.8
Portland (C)	10	219	644	112	1,899	1,931	2,391	6,221	28.0	28.4	36.4	30.9
Warrnambool (C)	23	497	1,435	237	5,555	5,653	6,459	17,667	36.0	36.7	43.3	38.6
Balance	7	57	164	26	379	393	474	1,246	21.4	22.2	27.7	23.8
Western District (SD)	75	1,276	3,689	623	12,931	12,507	14,670	40,108	32.7	31.6	38.3	34.2
Ararat (C)	6	101	313	22	1,057	1,297	1,316	3,670	33.8	41.4	43.4	39.5
Ballarat City (SSD)												
Central	20	581	1,850	259	9,198	8,286	9,459	26,943	51.1	46.0	54.3	50.4
Balance	7	183	601	97	2,515	2,250	2,743	7,508	44.3	39.7	50.0	44.6
Total	27	764	2,451	356	11,713	10,536	12,202	34,451	49.5	44.5	53.2	49.0
Daylesford & Glenlyon (S)	9	134	353	92	2,199	1,884	1,815	5,898	52.9	45.4	45.1	47.8
Moorabool (S) — West	4	58	179	18	541	405	608	1,554	30.1	22.5	34.9	29.1
Balance	11	98	265	47	843	808	921	2,572	27.7	26.6	31.3	28.5
Central Highlands (SD)	57	1,155	3,561	535	16,353	14,930	16,862	48,145	45.7	41.7	48.7	45.3
Horsham (C)	15	319	976	74	4,091	4,295	4,707	13,093	41.4	43.4	49.2	44.6
Lowan (S)	4	66	177	15	622	616	768	2,006	30.4	30.1	38.8	33.0
Stawell (C)	8	138	443	38	1,082	954	1,378	3,414	25.3	22.3	33.3	26.9
Stawell (S)	9	179	550	70	1,505	1,296	2,391	5,192	27.1	23.4	44.5	31.5
St Arnaud (T)	4	41	117	15	464	490	402	1,356	36.5	38.6	32.7	35.9
Warracknabeal (S)	3	35	96	7	389	500	504	1,393	35.9	46.1	48.0	43.3
Balance	7	86	257	20	1,218	1,235	1,317	3,770	45.7	46.3	51.0	47.6
Wimmera (SD)	50	864	2,616	239	9,371	9,386	11,467	30,224	35.0	35.0	44.2	38.0

## AND SELECTED STATISTICAL LOCAL AREAS, VICTORIA, SEPTEMBER QUARTER 1994 (a)

<i>Guest nights</i>				<i>Guest arrivals</i>				<i>Takings from accommodation (\$'000)</i>			
<i>July</i>	<i>Aug.</i>	<i>Sept.</i>	<i>Sept. qtr</i>	<i>July</i>	<i>Aug.</i>	<i>Sept.</i>	<i>Sept. qtr</i>	<i>July</i>	<i>Aug.</i>	<i>Sept.</i>	<i>Sept. qtr</i>
2,312	2,357	2,661	7,330	1,356	1,393	1,676	4,425	100	106	114	319
5,853	5,609	6,032	17,494	4,486	4,031	4,663	13,180	259	255	262	776
1,529	1,480	1,356	4,365	978	927	853	2,758	56	54	54	164
978	890	1,237	3,105	567	530	759	1,856	42	37	49	129
1,917	1,613	1,685	5,215	1,044	922	951	2,917	117	100	99	316
2,750	2,245	3,019	8,014	1,674	1,203	1,738	4,615	105	93	132	331
4,929	4,465	5,132	14,526	2,763	2,361	2,941	8,065	216	196	227	638
1,853	1,704	2,067	5,624	1,408	1,316	1,548	4,272	93	91	109	293
4,618	4,833	7,132	16,583	2,405	2,460	3,483	8,348	186	186	266	638
1,862	1,876	1,845	5,583	839	941	900	2,680	63	65	68	196
1,871	1,263	1,711	4,845	1,238	813	1,199	3,250	53	36	56	145
2,501	2,645	2,807	7,953	1,143	1,322	1,357	3,822	170	217	191	578
3,216	2,938	3,709	9,863	1,082	1,032	1,131	3,245	178	181	163	522
1,968	2,249	2,081	6,298	1,361	1,402	1,478	4,241	112	134	109	355
176,131	170,871	190,818	537,820	78,673	76,752	89,015	244,440	12,095	12,429	14,148	38,672
77,729	71,607	84,288	233,624	30,212	28,732	35,612	94,556	4,681	4,589	5,130	14,400
1,126	977	948	3,051	776	571	668	2,015	42	39	40	122
4,201	4,019	4,330	12,550	2,145	2,103	2,263	6,511	216	226	222	665
3,789	3,171	4,211	11,171	1,620	1,448	1,692	4,760	171	152	176	498
9,217	9,466	9,461	28,144	3,843	3,794	4,025	11,662	618	719	689	2,027
1,576	1,572	1,789	4,937	817	815	1,024	2,656	68	71	78	217
16,975	13,908	16,183	47,066	7,395	6,696	8,055	22,146	723	670	768	2,160
33,426	32,098	35,074	100,598	14,699	14,337	15,243	44,279	2,253	2,652	2,856	7,760
3,239	3,014	3,980	10,233	1,291	1,159	1,225	3,675	218	223	232	673
334	685	496	1,515	160	331	296	787	10	23	17	50
3,185	3,356	3,273	9,814	1,626	1,670	1,733	5,029	265	281	267	813
2,365	1,755	2,745	6,865	1,321	1,225	1,438	3,984	95	68	92	255
33,147	33,425	36,141	102,713	19,163	18,734	20,336	58,233	1,788	1,889	1,980	5,657
404,597	386,091	436,211	1,226,899	186,085	179,020	207,302	572,407	24,988	25,784	28,597	79,369
1,702	1,680	1,591	4,973	1,350	1,153	1,233	3,736	51	39	46	136
1,014	749	1,094	2,857	423	388	407	1,218	27	27	22	77
6,558	6,196	6,958	19,712	4,189	3,527	4,293	12,009	325	338	363	1,026
2,351	1,900	2,187	6,438	1,639	1,439	1,570	4,648	81	75	89	244
2,411	2,152	2,356	6,919	1,511	1,303	1,435	4,249	115	103	115	334
12,334	10,997	12,595	35,926	7,762	6,657	7,705	22,124	548	543	590	1,681
2,095	2,031	2,128	6,254	935	799	988	2,722	47	50	52	149
4,276	2,730	4,865	11,871	3,019	1,966	3,622	8,607	134	86	160	380
8,125	5,959	9,637	23,721	4,617	3,475	5,502	13,594	424	323	401	1,148
2,747	1,938	2,429	7,114	1,869	1,323	1,675	4,867	93	67	86	246
31,279	25,335	33,245	89,859	19,552	15,373	20,725	55,650	1,298	1,109	1,335	3,742
1,026	859	988	2,873	714	606	699	2,019	31	26	30	86
3,319	3,235	3,771	10,325	2,637	2,413	3,134	8,184	124	131	142	397
347	338	336	1,021	214	156	194	564	10	7	9	26
1,891	1,442	1,749	5,082	1,428	975	1,130	3,533	61	43	60	163
783	481	859	2,123	639	400	701	1,740	18	12	20	49
1,530	1,115	1,641	4,286	1,010	787	1,167	2,964	58	41	57	156
2,941	2,655	3,495	9,091	2,131	1,933	2,604	6,668	101	104	128	332
9,896	8,948	11,114	29,958	7,047	6,378	8,114	21,539	347	338	395	1,080
648	557	766	1,971	488	359	488	1,335	17	17	20	54
22,381	19,630	24,719	66,730	16,308	14,007	18,231	48,546	767	718	860	2,345
1,658	1,922	1,940	5,520	1,331	1,492	1,640	4,463	51	63	67	181
18,883	15,280	19,287	53,450	12,941	10,460	13,718	37,119	661	536	631	1,828
5,051	3,983	5,120	14,154	3,400	2,795	3,373	9,568	185	149	192	526
23,934	19,263	24,407	67,604	16,341	13,255	17,091	46,687	846	685	823	2,354
3,843	2,985	3,020	9,848	2,229	1,841	1,822	5,892	165	133	132	429
1,110	736	1,158	3,004	969	626	981	2,576	24	16	26	66
1,684	1,424	1,865	4,973	1,328	1,044	1,416	3,788	64	66	72	202
32,229	26,330	32,390	90,949	22,198	18,258	22,950	63,406	1,150	963	1,120	3,233
6,503	6,045	7,428	19,976	5,346	4,762	6,067	16,175	241	243	269	753
1,276	1,109	1,496	3,881	1,006	855	1,219	3,080	29	31	39	99
1,843	1,648	2,580	6,071	1,389	1,203	1,833	4,425	59	52	79	190
3,401	2,609	5,436	11,446	1,651	1,388	2,392	5,431	103	87	168	358
749	706	557	2,012	620	535	437	1,592	21	21	18	61
765	766	755	2,286	589	470	508	1,567	16	20	21	58
1,851	1,634	1,865	5,350	1,154	1,062	1,307	3,523	53	51	55	159
16,388	14,517	20,117	51,022	11,755	10,275	13,763	35,793	521	506	650	1,677

TABLE 7 — HOTELS, MOTELS AND GUEST HOUSES WITH FACILITIES: STATISTICAL DIVISIONS

Statistical Divisions and selected Statistical Local Areas	Establish- ments	Guest rooms	Bed spaces	Employ- ment (persons)	Room nights occupied				Room occupancy rates (per cent)			
					July	Aug.	Sept.	Sept. qtr	July	Aug.	Sept.	Sept. qtr
Kerang (B)	3	52	152	17	467	528	446	1,441	29.0	32.8	28.6	30.1
Mildura (C)	29	861	2,692	293	11,659	11,067	13,433	36,159	43.7	41.5	52.0	45.6
Mildura (S) — Pts A and B	5	75	215	33	862	913	1,098	2,873	37.1	39.3	48.8	41.6
Swan Hill (C)	15	356	1,095	129	5,209	5,268	5,900	16,377	47.2	47.7	55.2	50.0
Swan Hill (S)	6	89	292	25	641	847	819	2,307	23.2	30.7	30.7	28.2
Balance	7	81	242	31	1,109	1,281	1,286	3,676	44.2	51.0	52.9	49.3
<i>Mallee (SD)</i>	<i>65</i>	<i>1,514</i>	<i>4,688</i>	<i>528</i>	<i>19,947</i>	<i>19,904</i>	<i>22,982</i>	<i>62,833</i>	<i>42.5</i>	<i>42.4</i>	<i>50.6</i>	<i>45.1</i>
Castlemaine (C)	3	48	143	11	544	471	554	1,569	36.6	31.7	38.5	35.5
Echuca (C)	18	407	1,244	139	6,608	5,218	6,903	18,729	52.4	41.4	56.5	50.0
Greater Bendigo (C)												
Central	25	535	1,643	182	7,623	7,236	7,738	22,597	46.0	43.6	48.2	45.9
Balance	5	117	389	87	1,354	1,237	1,650	4,241	37.3	34.1	47.0	39.4
Total	30	652	2,032	269	8,977	8,473	9,388	26,838	44.4	41.9	48.0	44.7
Maryborough (C)	7	80	224	27	720	749	847	2,316	29.0	30.2	35.3	31.5
Balance	25	315	917	116	2,944	2,725	3,282	8,951	30.1	27.9	34.7	30.9
<i>Loddon-Campaspe (SD)</i>	<i>83</i>	<i>1,502</i>	<i>4,560</i>	<i>562</i>	<i>19,793</i>	<i>17,636</i>	<i>20,974</i>	<i>58,403</i>	<i>42.5</i>	<i>37.9</i>	<i>46.5</i>	<i>42.3</i>
Alexandra (S)	21	481	1,379	230	4,044	4,269	4,581	12,894	27.1	28.6	31.7	29.1
Benalla (C)	8	133	418	22	1,827	1,602	1,970	5,399	44.3	38.9	49.4	44.1
Cobram (S)	5	80	235	25	1,052	827	995	2,874	42.4	33.3	41.5	39.0
Euroa (S)	3	41	115	11	397	412	443	1,252	31.2	32.4	36.0	33.2
Goulburn (S)	5	55	193	12	320	372	370	1,062	18.8	21.8	22.4	21.0
Kilmore (S)	3	42	118	7	256	230	312	798	19.7	17.7	24.8	20.7
Kyabram (T)	3	38	101	16	625	612	504	1,741	53.1	52.0	44.2	49.8
Mansfield (S) (b)	23	537	2,140	262	6,047	7,462	5,556	19,065	36.3	44.8	34.5	38.6
Numurkah (S)	3	39	120	6	342	358	440	1,140	28.3	29.6	37.6	31.8
Rodney (S) - Pts A and B	4	48	152	30	720	798	1,014	2,532	48.4	53.6	70.4	57.3
Seymour (S)	6	106	334	55	1,904	1,671	1,742	5,317	57.9	50.9	54.8	54.5
Shepparton (C)	17	476	1,404	196	5,896	6,368	7,935	20,199	40.0	43.2	55.6	46.1
Balance	12	135	389	62	1,174	1,490	1,535	4,199	28.1	35.6	37.9	33.8
<i>Goulburn (SD)</i>	<i>113</i>	<i>2,211</i>	<i>7,098</i>	<i>934</i>	<i>24,604</i>	<i>26,471</i>	<i>27,397</i>	<i>78,472</i>	<i>35.9</i>	<i>38.6</i>	<i>41.3</i>	<i>38.6</i>
Beechworth (S)	6	86	249	31	1,042	661	1,239	2,942	39.1	24.8	48.0	37.2
Bright (S)	48	1,055	3,619	453	12,982	14,530	13,428	40,940	39.7	44.4	42.4	42.2
Myrtleford (S)	4	69	198	16	494	554	538	1,586	23.1	25.9	26.0	25.0
Rutherglen (S)	6	67	196	14	588	625	785	1,998	28.3	30.1	39.1	32.4
Upper Murray (S)	4	52	154	26	358	315	355	1,028	22.2	19.5	22.8	21.5
Wangaratta (C)	14	317	921	115	3,834	3,509	4,133	11,476	39.0	35.7	43.5	39.3
Wodonga (RC)	11	221	675	55	2,865	2,422	2,895	8,182	41.8	35.4	43.7	40.2
Yarrawonga (S)	7	148	442	35	978	922	1,176	3,076	21.3	20.1	26.5	22.6
Balance	4	68	224	13	279	497	702	1,478	13.2	23.6	34.4	23.6
<i>Ovens-Murray (SD)</i>	<i>104</i>	<i>2,083</i>	<i>6,678</i>	<i>758</i>	<i>23,420</i>	<i>24,035</i>	<i>25,251</i>	<i>72,706</i>	<i>36.3</i>	<i>37.2</i>	<i>40.4</i>	<i>37.9</i>
Bairnsdale (C)	12	227	639	91	2,666	2,848	2,840	8,354	37.9	40.5	41.7	40.0
Maffra (S)	3	34	94	13	279	303	340	922	26.5	28.7	33.3	29.5
Orbost (S)	13	177	561	60	1,587	1,444	1,807	4,838	29.8	27.0	34.0	30.2
Sale (C)	7	234	670	82	3,155	2,657	2,656	8,468	43.5	36.6	37.8	39.3
Tambo (S) --- Pts A and B	27	521	1,610	162	4,376	3,646	5,724	13,746	27.3	22.7	37.0	28.9
Balance	7	86	309	25	690	609	768	2,067	25.9	22.8	29.8	26.1
<i>East Gippsland (SD)</i>	<i>69</i>	<i>1,279</i>	<i>3,883</i>	<i>433</i>	<i>12,753</i>	<i>11,507</i>	<i>14,135</i>	<i>38,395</i>	<i>32.4</i>	<i>29.2</i>	<i>37.0</i>	<i>32.8</i>
Alberton (S)	5	76	219	23	511	508	688	1,707	21.7	21.6	30.2	24.4
Bass (S)	4	37	108	23	252	194	268	714	22.0	16.9	24.1	21.0
Morwell (C) --- Pt A	9	231	695	116	2,331	2,949	2,627	7,907	32.6	41.2	37.9	37.2
Narracan (S) Pt. A & B	4	112	317	24	1,157	649	368	2,174	33.3	18.7	11.0	21.1
Phillip Island (S)	12	288	964	147	2,654	1,842	2,236	6,732	29.7	20.6	25.9	25.4
Rosedale (S)	5	119	301	17	624	716	671	2,011	16.9	19.4	18.8	18.4
South Gippsland (S)	6	92	271	40	581	782	566	1,929	20.4	27.4	20.5	22.8
Traralgon (C)	10	224	597	82	2,443	2,607	2,696	7,746	35.2	37.5	40.1	37.6
Warragul (RC)	4	54	142	45	456	641	629	1,726	27.2	38.3	38.8	34.7
Woorayl (S)	3	51	134	10	551	640	697	1,888	34.9	40.5	45.6	40.2
Balance	9	163	463	57	1,524	1,281	1,107	3,912	30.2	25.4	22.6	26.1
<i>Gippsland (SD)</i>	<i>71</i>	<i>1,447</i>	<i>4,211</i>	<i>584</i>	<i>13,084</i>	<i>12,809</i>	<i>12,553</i>	<i>38,446</i>	<i>29.2</i>	<i>28.6</i>	<i>28.9</i>	<i>28.9</i>
<i>Total Victoria</i>	<i>1,003</i>	<i>29,680</i>	<i>81,988</i>	<i>15,843</i>	<i>427,960</i>	<i>421,853</i>	<i>465,616</i>	<i>1,315,429</i>	<i>46.5</i>	<i>45.9</i>	<i>52.3</i>	<i>48.2</i>

(a) As from 1 July 1994 substantial changes were made to Local Government Area boundaries in the Statistical Divisions of Central Highlands, Loddon-Campaspe and (b) Snow field resorts are included continuously as capacity (potentially) available irrespective of any off season closures. The average occupancy rates of establishments

## AND SELECTED STATISTICAL LOCAL AREAS, VICTORIA, SEPTEMBER QUARTER 1994 (a)—continued

Guest nights				Guest arrivals				Takings from accommodation (\$'000)			
July	Aug.	Sept.	Sept. qtr	July	Aug.	Sept.	Sept. qtr	July	Aug.	Sept.	Sept. qtr
726	762	738	2,226	599	644	604	1,847	25	28	24	77
21,030	18,102	24,194	63,326	13,471	11,488	15,206	40,165	625	564	703	1,891
1,623	1,311	1,713	4,647	855	593	893	2,341	33	33	41	108
9,410	8,976	10,239	28,625	6,996	6,435	7,655	21,086	291	269	306	866
1,127	1,368	1,489	3,984	955	1,049	1,151	3,155	26	32	33	91
1,553	1,622	1,715	4,890	1,249	1,163	1,288	3,700	46	50	49	145
35,469	32,141	40,088	107,698	24,125	21,372	26,797	72,294	1,046	975	1,156	3,178
1,079	844	1,009	2,932	856	750	889	2,495	36	29	38	103
12,770	9,203	12,965	34,938	8,676	6,725	9,062	24,463	430	337	416	1,183
13,609	11,408	14,112	39,129	10,401	8,614	10,468	29,483	501	446	504	1,451
2,480	1,968	2,510	6,958	1,716	1,419	1,853	4,988	95	82	96	273
16,089	13,376	16,622	46,087	12,117	10,033	12,321	34,471	596	528	600	1,724
1,065	972	1,112	3,149	777	831	919	2,527	33	36	40	110
5,047	4,448	5,583	15,078	3,693	3,072	3,956	10,721	159	142	177	479
36,050	28,843	37,291	102,184	26,119	21,411	27,147	74,677	1,254	1,073	1,271	3,598
7,499	7,428	8,334	23,261	3,690	4,168	4,029	11,887	340	320	362	1,022
3,246	2,673	3,482	9,401	2,129	1,961	2,213	6,303	96	84	98	278
1,901	1,433	1,729	5,063	1,173	939	1,155	3,267	49	41	46	137
740	734	845	2,319	529	524	579	1,632	22	22	24	67
680	734	799	2,213	456	496	472	1,424	15	15	17	47
490	464	602	1,556	350	282	374	1,006	12	10	15	37
945	781	670	2,396	514	389	361	1,264	24	23	20	67
15,991	21,107	15,727	52,825	7,296	9,365	6,516	23,177	686	956	745	2,387
537	537	730	1,804	398	390	549	1,337	12	14	19	45
1,204	1,237	1,677	4,118	788	691	842	2,321	37	40	47	124
3,013	2,572	2,890	8,475	1,974	1,849	1,997	5,820	121	113	109	342
9,599	9,563	12,318	31,480	6,518	6,761	7,909	21,188	350	341	443	1,134
2,034	2,133	2,270	6,437	1,117	1,323	1,298	3,738	71	83	85	239
47,879	51,396	52,073	151,348	26,932	29,138	28,294	84,364	1,835	2,063	2,029	5,927
2,353	1,303	2,723	6,379	1,807	1,082	1,976	4,865	65	41	73	179
34,260	38,349	34,151	106,760	11,998	13,630	12,202	37,830	1,534	1,894	1,455	4,883
906	991	979	2,876	574	677	517	1,768	22	25	22	69
1,177	1,221	1,600	3,998	972	782	1,087	2,841	29	30	39	98
678	555	744	1,977	600	458	726	1,784	21	19	22	61
6,331	5,355	6,713	18,399	4,634	3,881	4,848	13,363	201	181	216	597
5,306	4,183	5,792	15,281	3,243	2,671	3,350	9,264	129	111	139	379
1,850	1,595	2,279	5,724	1,273	1,134	1,016	3,423	36	36	44	116
569	972	1,473	3,014	356	419	658	1,433	14	27	38	80
53,430	54,524	56,454	164,408	25,457	24,734	26,380	76,571	2,051	2,363	2,048	6,463
4,479	4,222	4,554	13,255	2,973	2,899	3,009	8,881	152	161	164	478
417	425	491	1,333	303	283	371	957	15	14	15	44
3,154	2,733	3,827	9,714	2,579	2,104	3,010	7,693	79	72	97	248
4,703	3,600	3,777	12,080	2,543	2,381	2,720	7,644	205	162	156	523
9,652	6,904	11,870	28,426	6,502	4,940	7,573	19,015	232	177	316	724
1,720	1,493	1,866	5,079	1,078	785	1,171	3,034	53	50	50	153
24,125	19,377	26,385	69,887	15,978	13,392	17,854	47,224	735	636	798	2,169
763	656	1,119	2,538	574	503	734	1,811	22	21	30	73
500	363	504	1,367	383	292	397	1,072	12	10	13	35
3,065	3,581	3,710	10,356	2,135	2,303	2,304	6,742	133	163	140	437
2,401	1,248	616	4,265	771	875	445	2,091	56	35	14	105
5,725	3,879	5,302	14,906	4,397	3,234	4,242	11,873	163	108	157	428
828	886	884	2,598	433	415	473	1,321	18	19	19	56
1,113	1,170	1,095	3,378	884	836	896	2,616	33	40	32	106
3,540	3,560	3,901	11,001	2,322	2,438	2,591	7,351	109	110	118	337
810	990	1,075	2,875	698	756	864	2,318	23	35	32	90
884	986	1,079	2,949	567	580	630	1,777	25	29	32	86
2,582	2,044	1,794	6,420	1,855	1,603	1,364	4,822	81	72	62	214
22,211	19,363	21,079	62,653	15,019	13,835	14,940	43,794	677	642	650	1,969
726,038	677,547	780,052	2,183,637	389,528	360,815	424,383	1,174,726	36,323	36,831	40,515	113,668

Barwon in accordance with the Australian Standard Geographical Code edition 2.4. Refer to pages 30 and 31 for details.

Bright (S) and Mansfield (S) actually remaining open during the snow fields off season, therefore, are significantly higher than the overall rates published.

TABLE 8 — HOLIDAY FLATS, UNITS AND HOUSES BY STATISTICAL DIVISION, VICTORIA

Particulars	Melbourne (SD)	Barwon (SD)	Western District (SD) and Central Highlands (SD)	Wimmera (SD)	Mallee (SD)	Loddon- Campaspe (SD)
LETTING ENTITIES, CAPACITY AND EMPLOYMENT						
September quarter 1993— Letting entities	37	20	9	8	9	6
Flats, units and houses						
Single bedroom	687	33	6	43	25	18
Multiple bedroom	587	286	75	51	72	25
Total flats, units and houses	1,274	319	81	94	97	43
Bed spaces	4,339	1,811	379	403	407	193
Employment (persons) (a)	245	47	25	27	17	21
September quarter 1994— Letting entities	37	23	12	10	7	5
Flats, units and houses						
Single bedroom	691	33	18	52	14	9
Multiple bedroom	525	362	94	65	69	25
Total flats, units and houses	1,216	395	112	117	83	34
Bed spaces	3,814	1,943	518	510	364	165
Employment (persons) (a)	278	57	31	34	17	12
UNIT NIGHTS OCCUPIED						
September quarter 1993	62,199	6,987	3,310	4,094	5,256	1,510
1994—						
July	24,426	2,767	1,546	1,847	1,514	586
August	22,986	1,977	1,122	1,244	1,492	396
September	24,057	2,780	1,581	2,207	1,605	541
September quarter 1994	71,469	7,524	4,249	5,298	4,611	1,523
UNIT OCCUPANCY RATES (per cent)						
September quarter 1993	53.1	23.8	44.4	47.3	58.9	38.2
1994—						
July	64.8	22.6	44.5	50.9	58.8	55.6
August	61.0	16.1	32.3	35.5	58.0	37.6
September	65.9	23.5	47.1	62.9	64.5	53.0
September quarter 1994	63.9	20.7	41.2	49.8	60.4	48.7
UNIT LETTINGS						
September quarter 1993	13,617	2,191	1,059	1,459	1,226	598
1994—						
July	4,541	907	572	761	420	211
August	3,867	713	384	530	313	161
September	4,503	935	451	794	430	216
September quarter 1994	12,911	2,555	1,407	2,085	1,163	588
AVERAGE LENGTH OF STAY (days)						
September quarter 1993	4.6	3.2	3.1	2.8	4.3	2.5
1994—						
July	5.4	3.1	2.7	2.4	3.6	2.8
August	5.9	2.8	2.9	2.3	4.8	2.5
September	5.3	3.0	3.5	2.8	3.7	2.5
September quarter 1994	5.5	2.9	3.0	2.5	4.0	2.6
TAKINGS FROM ACCOMMODATION (\$'000)						
September quarter 1993	5,616	458	167	227	262	80
1994—						
July	2,296	203	80	128	88	30
August	2,147	148	58	88	66	21
September	2,316	211	86	157	93	27
September quarter 1994	6,759	563	224	373	247	78



TABLE 8 — HOLIDAY FLATS, UNITS AND HOUSES BY STATISTICAL DIVISION, VICTORIA—continued

Particulars	Victoria						Total
	Goulburn (SD)	Ovens- Murray (SD)	East Gippsland (SD)	Gippsland (SD)	Real estate agents	Other letting entities	
LETTING ENTITIES, CAPACITY AND EMPLOYMENT							
September quarter 1993 - Letting entities	7	34	46	8	23	161	184
Flats, units and houses							
Single bedroom	20	52	76	25	40	945	985
Multiple bedroom	38	304	365	199	672	1,330	2,002
Total flats, units and houses	58	356	441	224	712	2,275	2,987
Bed spaces	296	1,768	2,210	1,354	4,347	8,813	13,160
Employment (persons) (a)	17	82	96	48	—	625	625
September quarter 1994— Letting entities	7	38	49	9	20	177	197
Flats, units and houses							
Single bedroom	15	76	75	33	25	991	1,016
Multiple bedroom	46	330	397	190	625	1,478	2,103
Total flats, units and houses	61	406	472	223	650	2,469	3,119
Bed spaces	313	2,093	2,331	1,340	3,653	9,738	13,391
Employment (persons) (a)	25	115	104	59	—	732	732
UNIT NIGHTS OCCUPIED							
September quarter 1993	1,721	9,916	9,092	4,592	4,122	104,555	108,677
1994—							
July	825	5,084	3,966	1,734	1,723	42,572	44,295
August	635	4,746	2,503	1,189	1,263	37,027	38,290
September	977	4,484	4,375	2,054	1,904	42,757	44,661
September quarter 1994	2,437	14,314	10,844	4,977	4,890	122,356	127,246
UNIT OCCUPANCY RATES (per cent)							
September quarter 1993	32.3	30.3	22.5	22.3	6.3	50.0	39.6
1994—							
July	43.6	40.4	27.1	25.1	8.6	55.6	45.8
August	33.6	37.7	17.1	17.2	6.3	48.5	39.7
September	53.4	36.8	30.9	30.7	9.8	57.7	47.7
September quarter 1994	43.4	38.3	25.0	24.3	8.2	53.9	44.4
UNIT LETTINGS							
September quarter 1993	667	2,640	2,636	1,344	624	26,813	27,437
1994—							
July	274	1,320	1,230	649	239	10,646	10,885
August	221	1,231	825	486	214	8,517	8,731
September	303	1,253	1,148	555	307	10,281	10,588
September quarter 1994	798	3,804	3,203	1,690	760	29,444	30,204
AVERAGE LENGTH OF STAY (days)							
September quarter 1993	2.6	3.8	3.4	3.4	6.6	3.9	4.0
1994—							
July	3.0	3.9	3.2	2.7	7.2	4.0	4.1
August	2.9	3.9	3.0	2.4	5.9	4.3	4.4
September	3.2	3.6	3.8	3.7	6.2	4.2	4.2
September quarter 1994	3.1	3.8	3.4	2.9	6.4	4.2	4.2
TAKINGS FROM ACCOMMODATION (\$'000)							
September quarter 1993	86	975	490	286	254	8,393	8,648
1994—							
July	45	638	203	86	91	3,707	3,798
August	38	736	156	74	114	3,418	3,532
September	60	587	238	133	107	3,802	3,908
September quarter 1994	143	1,960	597	293	312	10,926	11,238

(a) Employment numbers exclude real estate agents and their employees.

TABLE 9—CARAVAN PARKS: STATISTICAL DIVISIONS AND SELECTED

Statistical Divisions and Selected Statistical Local Areas	Establish- ments	Capacity				Cabins, flats, etc.	Total	Sites occupied by long- term guests	Other sites perman- ently reserved	Employ- ment (persons)
		On-site vans	Other powered sites	Unpow- ered sites						
Flinders (S)	39	108	3,563	541	102	4,314	175	1,799	84	
Hastings (S)	7	28	335	298	7	668	92	119	16	
Healesville (S)	3	11	154	15	30	210	53	19	14	
Springvale (C)	5	233	468	90	10	801	490	3	35	
Upper Yarra (S) — Pt A	3	15	183	205	2	405	66	32	6	
Werribee (C)	4	16	200	20	20	256	160	6	14	
Balance	32	514	1,992	136	487	3,129	1,520	79	143	
<i>Melbourne (SD)</i>	93	925	6,895	1,305	658	9,783	2,556	2,057	312	
Colac (C)	3	24	96	18	3	141	26	6	8	
Greater Geelong City Part A (SSD)										
South Barwon — Inner	7	105	449	80	65	699	308	3	27	
Bellerine — Inner	4	42	391	10	66	509	143	197	16	
Total	11	147	840	90	131	1,208	451	200	43	
Greater Geelong (C) — Pts B and C	15	16	3,619	346	207	4,188	55	1,752	65	
Otway (S)	11	41	530	344	65	980	5	194	26	
Queenscliffe (B)	8	1	716	—	26	743	18	402	32	
Surf Coast (S) — Pts A and B	15	55	2,741	144	48	2,988	18	861	68	
<i>Barwon (SD)</i>	63	284	8,542	942	480	10,248	573	3,415	242	
Heywood (S)	4	14	131	210	12	367	5	—	7	
Mount Rouse (S)	3	4	38	24	1	67	1	1	4	
Port Fairy (B)	6	20	921	696	34	1,671	10	43	11	
Portland (C)	5	41	389	66	41	537	64	5	18	
Wannon (S)	3	6	76	44	1	127	1	2	5	
Warrnambool (C)	6	40	1,311	101	131	1,583	66	10	49	
Warrnambool (S)	3	14	203	54	5	276	—	—	5	
Balance	14	18	541	601	43	1,203	41	70	26	
<i>Western District (SD)</i>	44	157	3,610	1,796	268	5,831	188	131	125	
Ballarat City (SSD)										
Central	5	81	413	168	58	720	71	13	27	
Balance	3	9	238	180	21	448	39	70	10	
Total	8	90	651	348	79	1,168	110	83	37	
Moorabool (S) — East	4	10	131	21	18	180	20	79	6	
Balance	13	58	674	228	35	995	81	132	23	
<i>Central Highlands (SD)</i>	25	158	1,456	597	132	2,343	211	294	66	
Stawell (S)	5	25	410	534	112	1,081	1	90	34	
Wimmera (S)	4	17	43	26	19	105	—	—	9	
Balance	18	75	723	537	63	1,398	87	41	39	
<i>Wimmera (SD)</i>	27	117	1,176	1,097	194	2,584	88	131	82	
Kerang (B) and Kerang (S)	8	43	306	212	25	586	27	73	15	
Mildura (C)	13	210	797	329	151	1,487	237	17	59	
Mildura (S) — Pts A and B	8	68	509	141	52	770	116	3	21	
Swan Hill (C)	5	36	411	136	73	656	33	17	30	
Swan Hill (S)	6	43	280	198	13	534	21	7	16	
Balance	7	12	172	188	6	378	16	4	10	
<i>Mallee (SD)</i>	47	412	2,475	1,204	320	4,411	450	121	151	
Echuca (C)	5	68	570	117	40	795	94	199	24	
Greater Bendigo (C)										
Marong — Inner	4	43	191	108	27	369	72	32	13	
Balance	5	78	420	214	55	767	158	42	24	
Total	9	121	611	322	82	1,136	230	74	37	
Korong (S)	4	13	126	81	8	228	30	15	6	
Rochester (S)	4	18	269	96	5	388	25	121	8	
Balance	25	93	2,413	725	51	3,282	206	1,415	66	
<i>Loddon-Campaspe (SD)</i>	47	313	3,989	1,341	186	5,829	585	1,824	141	

## STATISTICAL LOCAL AREAS, VICTORIA, SEPTEMBER QUARTER 1994 (a)

<i>Site nights occupied (b)</i>				<i>Site occupancy rates (per cent) (b)</i>				<i>Takings from accommodation (\$ '000)</i>			
<i>July</i>	<i>Aug.</i>	<i>Sept.</i>	<i>Sept. qtr</i>	<i>July</i>	<i>Aug.</i>	<i>Sept.</i>	<i>Sept. qtr</i>	<i>July</i>	<i>Aug.</i>	<i>Sept.</i>	<i>Sept. qtr</i>
62,629	62,272	61,442	186,343	47.0	47.1	48.0	47.4	509	335	340	1,185
6,711	6,718	6,656	20,085	32.4	32.4	33.2	32.7	38	37	46	120
3,518	3,550	3,523	10,591	54.0	54.5	55.9	54.8	37	32	42	111
15,732	15,787	15,364	46,883	63.4	63.6	63.9	63.6	177	165	175	516
3,509	3,408	3,508	10,425	27.9	27.1	28.9	28.0	29	26	33	87
5,601	5,451	5,398	16,450	70.6	68.7	70.3	69.8	40	37	39	116
64,205	63,741	63,756	191,702	66.2	65.7	67.9	66.6	784	754	816	2,354
161,905	160,927	159,647	482,479	53.5	53.3	54.7	53.8	1,613	1,386	1,490	4,489
1,143	1,088	1,117	3,348	26.1	24.9	26.4	25.8	7	7	7	21
11,189	11,690	11,550	34,429	51.6	53.9	55.1	53.5	105	106	111	322
10,924	11,264	11,467	33,655	69.2	71.4	75.1	71.9	45	41	85	171
22,113	22,954	23,017	68,084	59.0	61.3	63.5	61.3	150	147	196	493
59,259	59,271	58,054	176,584	45.6	45.7	46.2	45.8	749	336	350	1,435
8,418	7,948	7,977	24,343	27.7	26.2	27.1	27.0	41	35	47	124
13,983	13,437	13,816	41,236	60.7	58.3	62.0	60.3	76	77	97	250
29,968	29,479	29,758	89,205	32.4	31.8	33.2	32.5	130	182	329	641
134,884	134,177	133,739	402,800	42.5	42.2	43.5	42.7	1,152	784	1,027	2,963
420	328	526	1,274	3.7	3.7	4.8	4.1	7	5	9	20
141	114	118	373	6.8	5.5	5.9	6.1	1	0	1	2
2,190	2,123	2,435	6,748	4.2	4.1	4.9	4.4	16	10	19	46
2,455	2,446	2,708	7,609	14.7	14.7	16.8	15.4	24	25	30	80
113	137	165	415	2.9	3.5	4.3	3.6	1	0	1	2
5,555	4,995	6,855	17,405	11.3	10.2	14.4	12.0	109	72	140	321
238	168	276	682	4.5	3.2	4.0	3.9	3	2	5	10
4,314	4,268	4,855	13,437	11.6	11.4	13.5	12.1	31	33	46	110
15,426	14,579	17,938	47,943	8.7	8.3	10.3	9.1	192	148	252	592
4,729	4,743	5,409	14,881	21.2	21.3	25.0	22.5	70	68	84	223
3,874	4,017	3,914	11,805	27.9	28.9	29.1	28.6	22	23	23	69
8,603	8,760	9,323	26,686	23.8	24.2	26.6	24.8	92	92	107	292
3,292	3,282	3,278	9,852	59.0	58.8	60.7	59.5	17	16	16	49
7,517	7,479	7,682	22,678	24.4	24.2	25.7	24.8	51	38	45	134
19,412	19,521	20,283	59,216	26.7	26.9	28.9	27.5	160	147	168	474
4,657	3,979	7,968	16,604	13.9	11.9	24.6	16.7	73	43	154	270
327	218	593	1,138	10.0	6.7	18.8	11.8	12	9	21	41
5,948	6,447	7,211	19,606	13.7	14.9	17.2	15.2	58	63	79	199
10,932	10,644	15,772	37,348	13.6	13.3	20.3	15.7	142	114	254	510
3,496	3,853	3,980	11,329	19.2	21.2	22.6	21.0	18	20	24	62
16,764	16,536	19,129	52,429	36.4	35.9	42.9	38.3	234	242	293	770
5,604	5,304	5,674	16,582	23.5	22.2	24.6	23.4	50	46	53	150
4,027	3,729	4,490	12,246	19.8	18.3	22.8	20.3	66	52	84	203
1,750	1,667	1,722	5,139	10.6	10.1	10.7	10.5	21	18	19	57
1,007	960	862	2,829	8.6	8.2	7.6	8.1	7	7	6	20
32,648	32,049	35,857	100,554	23.9	23.4	27.1	24.8	397	385	480	1,262
11,150	10,346	11,929	33,425	45.2	42.0	50.0	45.7	94	75	109	277
4,054	3,816	3,899	11,769	35.4	33.4	35.2	34.7	44	30	44	118
8,230	7,310	9,268	24,808	34.6	30.7	40.3	35.2	91	73	97	261
12,284	11,126	13,167	36,577	34.9	31.6	38.6	35.0	135	103	141	379
1,557	1,517	1,644	4,718	22.0	21.5	24.0	22.5	7	8	9	25
4,681	4,681	4,637	13,999	38.9	38.9	39.8	39.2	13	10	10	33
46,254	52,780	54,148	153,182	49.7	51.9	55.0	52.2	126	167	199	492
75,926	80,450	85,525	241,901	44.1	44.5	48.9	45.9	375	363	468	1,206

TABLE 9 — CARAVAN PARKS: STATISTICAL DIVISIONS AND SELECTED

Statistical Divisions and Selected Statistical Local Areas	Capacity					Total	Sites occupied by long-term guests	Other sites permanently reserved	Employment (persons)
	Establishments	On-site vans	Other powered sites	Unpowered sites	Cabins, flats, etc.				
Alexandra (S)	12	52	1,040	550	50	1,692	36	700	51
Benalla (S)	3	19	89	52	1	161	15	22	7
Cobram (S)	5	32	427	570	17	1,046	39	285	15
Mansfield (S)	8	32	829	137	72	1,070	5	660	28
Nathalia (S)	5	17	232	95	8	352	28	123	11
Rodney (S) — Pts A and B	6	97	269	39	20	425	80	18	13
Shepparton (C)	5	36	432	79	48	595	156	106	14
Balance	23	166	1,465	622	81	2,334	324	759	54
<i>Goulburn (SD)</i>	<i>67</i>	<i>451</i>	<i>4,783</i>	<i>2,144</i>	<i>297</i>	<i>7,675</i>	<i>683</i>	<i>2,673</i>	<i>193</i>
Beechworth (S)	3	29	161	110	28	328	14	52	10
Bright (S)	16	93	1,337	616	159	2,205	8	469	42
Oxley (S)	4	18	86	102	8	214	6	12	6
Tallangatta (S) — Pts A and B	5	17	325	181	13	536	8	85	8
Wangaratta (C)	3	50	259	95	28	432	41	9	14
Wodonga (RC)	4	48	370	126	17	561	94	132	9
Yarrowonga (S)	5	14	545	181	37	777	59	117	13
Balance	8	49	441	326	25	841	70	55	16
<i>Ovens Murray (SD)</i>	<i>48</i>	<i>318</i>	<i>3,524</i>	<i>1,737</i>	<i>315</i>	<i>5,894</i>	<i>300</i>	<i>931</i>	<i>118</i>
Avon (S)	5	26	107	72	4	209	11	7	14
Bairnsdale (S) — Pts A and B	8	59	643	196	31	929	87	322	20
Maffra (S)	6	9	394	249	6	658	18	229	17
Orbost (S)	13	90	833	673	46	1,642	25	97	31
Tambo (S) — Pts A and B	37	187	1,306	361	246	2,100	126	335	128
Balance	6	53	422	270	32	777	84	89	21
<i>East Gippsland (SD)</i>	<i>75</i>	<i>424</i>	<i>3,705</i>	<i>1,821</i>	<i>365</i>	<i>6,315</i>	<i>351</i>	<i>1,079</i>	<i>231</i>
Alberton (S)	8	32	443	154	22	651	15	251	22
Bass (S)	6	23	401	66	2	492	11	211	12
Buln Buln (S)	5	39	181	111	35	366	67	40	10
Phillip Island (S)	13	99	1,207	92	36	1,434	12	705	54
Rosedale (S)	3	22	382	81	8	493	12	121	6
South Gippsland (S)	9	26	332	375	27	760	18	289	19
Traralgon (C)	4	53	384	—	47	484	158	4	6
Wonthaggi (B)	3	23	305	30	3	361	31	78	6
Woorayl (S)	7	17	647	176	19	859	16	377	20
Balance	8	28	525	296	31	880	132	72	19
<i>Gippsland (SD)</i>	<i>66</i>	<i>362</i>	<i>4,807</i>	<i>1,381</i>	<i>230</i>	<i>6,780</i>	<i>472</i>	<i>2,148</i>	<i>174</i>
<i>Victoria</i>									
Short-term parks	438	2,063	36,395	13,066	2,307	53,831	1,708	14,447	1,325
Long-term parks	164	1,858	8,567	2,299	1,138	13,862	4,749	357	510
Total	602	3,921	44,962	15,365	3,445	67,693	6,457	14,804	1,835

(a) As from 1 July 1994 substantial changes were made to Local Government Area boundaries in the Statistical Divisions of Central Highlands, Loddon-Campaspe and

(b) Permanently reserved sites (including on-site vans and cabins) have been recorded continuously as Site nights occupied. See Explanatory Notes 11 and 14.

## STATISTICAL LOCAL AREAS, VICTORIA, SEPTEMBER QUARTER 1994 (a)—continued

<i>Site nights occupied (b)</i>				<i>Site occupancy rates (per cent) (b)</i>				<i>Takings from accommodation (\$'000)</i>			
<i>July</i>	<i>Aug.</i>	<i>Sept.</i>	<i>Sept. qtr</i>	<i>July</i>	<i>Aug.</i>	<i>Sept.</i>	<i>Sept. qtr</i>	<i>July</i>	<i>Aug.</i>	<i>Sept.</i>	<i>Sept. qtr</i>
23,805	23,710	23,250	70,765	45.4	45.2	45.8	45.5	179	104	81	364
1,275	1,322	1,280	3,877	25.5	26.5	26.5	26.2	5	6	6	16
10,356	10,301	10,162	30,819	31.9	31.8	32.4	32.0	40	41	61	142
21,879	21,730	21,218	64,827	66.0	65.5	66.1	65.9	156	97	110	363
4,983	5,154	4,954	15,091	45.7	47.2	46.9	46.6	11	14	13	39
3,286	3,389	3,202	9,877	24.9	25.7	25.1	25.3	39	39	38	116
8,902	8,722	8,764	26,388	48.3	47.3	49.1	48.2	62	61	69	192
35,648	34,888	34,482	105,018	49.3	48.2	49.2	48.9	178	145	148	470
<i>110,134</i>	<i>109,216</i>	<i>107,312</i>	<i>326,662</i>	<i>46.3</i>	<i>45.9</i>	<i>46.6</i>	<i>46.3</i>	<i>670</i>	<i>505</i>	<i>525</i>	<i>1,701</i>
2,450	2,324	2,618	7,392	24.1	22.9	26.6	24.5	20	14	25	58
18,716	20,517	20,166	59,399	27.4	30.0	30.5	29.3	126	121	124	371
779	724	777	2,280	11.7	10.9	12.1	11.6	5	5	6	15
3,093	3,075	3,107	9,275	18.6	18.5	19.3	18.8	6	4	8	17
3,030	2,035	2,346	7,411	22.6	15.2	18.1	18.6	30	25	30	85
8,526	8,375	9,202	26,103	49.0	48.2	54.7	50.6	39	38	55	132
6,701	6,542	6,898	20,141	27.8	27.2	29.6	28.2	35	30	71	136
5,234	5,002	5,623	15,859	20.1	19.2	22.3	20.5	31	26	36	92
<i>48,529</i>	<i>48,594</i>	<i>50,737</i>	<i>147,860</i>	<i>26.6</i>	<i>26.6</i>	<i>28.7</i>	<i>27.3</i>	<i>291</i>	<i>262</i>	<i>353</i>	<i>906</i>
940	799	864	2,603	14.5	12.3	13.8	13.5	10	6	10	26
13,687	13,798	13,703	41,188	47.5	47.9	49.2	48.2	48	49	53	151
7,810	7,845	8,193	23,848	38.3	38.5	41.5	39.4	9	7	15	30
5,330	5,565	7,725	18,620	11.1	11.6	16.1	13.0	27	24	53	104
19,034	17,804	19,820	56,658	29.2	27.3	31.5	29.3	152	116	190	459
6,627	6,716	6,742	20,085	27.5	27.9	28.9	28.1	54	52	57	162
<i>53,428</i>	<i>52,527</i>	<i>57,047</i>	<i>163,002</i>	<i>27.7</i>	<i>27.3</i>	<i>30.3</i>	<i>28.4</i>	<i>299</i>	<i>255</i>	<i>378</i>	<i>932</i>
8,933	8,672	8,703	26,308	44.3	43.0	44.6	43.9	33	29	35	97
7,094	7,047	7,446	21,587	46.5	46.2	50.4	47.7	25	24	23	72
3,516	3,504	3,375	10,395	31.0	30.9	30.7	30.9	24	24	24	73
24,041	23,550	24,329	71,920	54.1	53.0	56.6	54.5	214	70	115	399
4,297	4,195	4,228	12,720	28.1	27.4	28.6	28.0	10	8	12	29
10,250	10,148	10,062	30,460	43.5	43.1	44.1	43.6	28	24	27	79
5,124	5,089	5,099	15,312	34.2	33.9	35.1	34.4	41	39	38	119
4,347	4,384	4,328	13,059	38.8	39.2	40.0	39.3	14	14	15	44
12,888	12,776	12,662	38,326	48.4	48.0	49.1	48.5	45	48	55	148
6,876	6,818	6,755	20,449	25.2	25.0	25.6	25.3	49	46	48	143
<i>87,366</i>	<i>86,183</i>	<i>86,987</i>	<i>260,536</i>	<i>41.6</i>	<i>41.0</i>	<i>42.8</i>	<i>41.8</i>	<i>483</i>	<i>328</i>	<i>392</i>	<i>1,203</i>
566,297	565,269	587,307	1,718,873	34.3	34.1	36.5	34.9	3,899	2,851	3,852	10,602
184,293	183,598	183,537	551,428	42.9	42.7	44.1	43.2	1,876	1,826	1,933	5,635
750,590	748,867	770,844	2,270,301	36.0	35.9	38.0	36.6	5,775	4,677	5,786	16,238

Barwon in accordance with the Australian Standard Geographical Code edition 2.4. Refer to pages 30 and 31 for details.

TABLE 10—CARAVAN PARKS BY STATISTICAL DIVISION, VICTORIA

Particulars	Melbourne (SD)			Barwon (SD)			Western District (SD)			Central Highlands (SD)		
	Short-term	Long-term	Total	Short-term	Long-term	Total	Short-term	Long-term	Total	Short-term	Long-term	Total
ESTABLISHMENTS, CAPACITY AND EMPLOYMENT												
<i>September quarter 1993—</i>												
Establishments	50	41	91	50	11	61	31	13	44	18	6	24
Capacity												
On-site vans	199	840	1,039	176	112	288	94	76	170	101	44	145
Other powered sites	4,102	2,772	6,874	7,910	678	8,588	2,979	626	3,605	1,251	160	1,411
Unpowered sites	978	293	1,271	963	44	1,007	1,544	171	1,715	653	46	699
Cabins, flats, etc.	189	262	451	378	80	458	202	60	262	90	46	136
<i>Total capacity</i>	<i>5,468</i>	<i>4,167</i>	<i>9,635</i>	<i>9,427</i>	<i>914</i>	<i>10,341</i>	<i>4,819</i>	<i>933</i>	<i>5,752</i>	<i>2,095</i>	<i>296</i>	<i>2,391</i>
Sites occupied by long-term guests	267	2,276	2,543	184	345	529	65	136	201	132	78	210
Other sites permanently reserved (a)	1,968	104	2,072	3,164	9	3,173	117	10	127	259	9	268
Employment (persons)	146	172	318	195	40	235	84	34	118	51	15	66
<i>September quarter 1994—</i>												
Establishments	54	39	93	52	11	63	30	14	44	17	8	25
Capacity												
On-site vans	226	699	925	151	133	284	78	79	157	93	65	158
Other powered sites	4,297	2,598	6,895	7,887	655	8,542	3,097	513	3,610	1,175	281	1,456
Unpowered sites	994	311	1,305	842	100	942	1,597	199	1,796	496	101	597
Cabins, flats, etc.	225	433	658	396	84	480	208	60	268	78	54	132
<i>Total capacity</i>	<i>5,742</i>	<i>4,041</i>	<i>9,783</i>	<i>9,276</i>	<i>972</i>	<i>10,248</i>	<i>4,980</i>	<i>851</i>	<i>5,831</i>	<i>1,842</i>	<i>501</i>	<i>2,343</i>
Sites occupied by long-term guests	281	2,275	2,556	165	408	573	46	142	188	100	111	211
Other sites permanently reserved (a)	1,977	80	2,057	3,404	11	3,415	116	15	131	273	21	294
Employment (persons)	141	171	312	203	39	242	77	48	125	49	17	66
SITE NIGHTS OCCUPIED ('000) (a)												
<i>September quarter 1993</i>	<i>230.8</i>	<i>248.4</i>	<i>479.2</i>	<i>331.5</i>	<i>44.5</i>	<i>376.0</i>	<i>32.8</i>	<i>16.0</i>	<i>48.8</i>	<i>47.9</i>	<i>10.8</i>	<i>58.7</i>
<i>1994—</i>												
July	77.9	84.0	161.9	120.0	14.9	134.9	9.3	6.1	15.4	14.2	5.2	19.4
August	77.5	83.5	160.9	118.8	15.3	134.2	8.8	5.7	14.6	14.2	5.3	19.5
September	78.2	81.5	159.6	118.6	15.2	133.7	11.2	6.8	17.9	15.1	5.2	20.3
<i>September quarter 1994</i>	<i>233.6</i>	<i>248.9</i>	<i>482.5</i>	<i>357.5</i>	<i>45.3</i>	<i>402.8</i>	<i>29.3</i>	<i>18.6</i>	<i>47.9</i>	<i>43.5</i>	<i>15.7</i>	<i>59.2</i>
SITE OCCUPANCY RATES (per cent) (a)												
<i>September quarter 1993</i>	<i>45.9</i>	<i>64.8</i>	<i>54.1</i>	<i>38.8</i>	<i>52.9</i>	<i>40.1</i>	<i>7.4</i>	<i>18.6</i>	<i>9.2</i>	<i>24.9</i>	<i>39.6</i>	<i>26.7</i>
<i>1994</i>												
July	43.9	67.1	53.5	41.7	49.3	42.5	6.2	23.1	8.7	24.9	33.3	26.7
August	43.9	66.6	53.3	41.3	50.9	42.2	5.9	21.8	8.3	24.9	34.1	26.9
September	45.8	67.2	54.7	42.6	52.0	43.5	7.5	26.6	10.3	27.2	34.8	28.9
<i>September quarter 1994</i>	<i>44.5</i>	<i>67.0</i>	<i>53.8</i>	<i>41.9</i>	<i>50.7</i>	<i>42.7</i>	<i>6.5</i>	<i>23.8</i>	<i>9.1</i>	<i>25.7</i>	<i>34.0</i>	<i>27.5</i>
TAKINGS FROM ACCOMMODATION (\$'000)												
<i>September quarter 1993</i>	<i>1,646</i>	<i>2,846</i>	<i>4,493</i>	<i>2,286</i>	<i>376</i>	<i>2,662</i>	<i>481</i>	<i>150</i>	<i>631</i>	<i>379</i>	<i>112</i>	<i>491</i>
<i>1994</i>												
July	682	931	1,613	1,016	137	1,152	128	63	192	108	51	160
August	476	910	1,386	647	137	784	92	56	148	96	51	147
September	558	932	1,490	884	143	1,027	178	74	252	115	53	168
<i>September quarter 1994</i>	<i>1,716</i>	<i>2,774</i>	<i>4,489</i>	<i>2,546</i>	<i>416</i>	<i>2,963</i>	<i>399</i>	<i>193</i>	<i>592</i>	<i>319</i>	<i>155</i>	<i>474</i>

TABLE 10 — CARAVAN PARKS BY STATISTICAL DIVISION, VICTORIA—continued

Particulars	Wimmera (SD)			Mallee (SD)			Loddon-Campaspe (SD)			Goulburn (SD)		
	Short-term	Long-term	Total	Short-term	Long-term	Total	Short-term	Long-term	Total	Short-term	Long-term	Total
<b>ESTABLISHMENTS, CAPACITY AND EMPLOYMENT</b>												
<i>September quarter 1993—</i>												
Establishments	21	5	26	31	16	47	34	12	46	45	21	66
Capacity												
On-site vans	n.p.	n.p.	139	219	222	441	188	99	287	191	204	395
Other powered sites	n.p.	n.p.	1,161	1,530	937	2,467	3,234	652	3,886	3,966	756	4,722
Unpowered sites	n.p.	n.p.	960	983	271	1,254	998	327	1,325	1,918	191	2,109
Cabins, flats, etc.	n.p.	n.p.	152	195	87	282	124	43	167	181	103	284
<i>Total capacity</i>	<i>n.p.</i>	<i>n.p.</i>	<i>2,412</i>	<i>2,927</i>	<i>1,517</i>	<i>4,444</i>	<i>4,544</i>	<i>1,121</i>	<i>5,665</i>	<i>6,256</i>	<i>1,254</i>	<i>7,510</i>
Sites occupied by long-term guests	n.p.	n.p.	86	134	339	473	259	296	555	279	373	652
Other sites permanently reserved (a)	n.p.	n.p.	116	88	20	108	1,642	70	1,712	2,582	45	2,627
Employment (persons)	n.p.	n.p.	70	108	49	157	103	47	150	155	45	200
<i>September quarter 1994—</i>												
Establishments	22	5	27	28	19	47	33	14	47	44	23	67
Capacity												
On-site vans	100	17	117	210	202	412	165	148	313	197	254	451
Other powered sites	923	253	1,176	1,482	993	2,475	3,354	635	3,989	3,909	874	4,783
Unpowered sites	988	109	1,097	862	342	1,204	985	356	1,341	1,840	304	2,144
Cabins, flats, etc.	156	38	194	223	97	320	140	46	186	173	124	297
<i>Total capacity</i>	<i>2,167</i>	<i>417</i>	<i>2,584</i>	<i>2,777</i>	<i>1,634</i>	<i>4,411</i>	<i>4,644</i>	<i>1,185</i>	<i>5,829</i>	<i>6,119</i>	<i>1,556</i>	<i>7,675</i>
Sites occupied by long-term guests	30	58	88	104	346	450	268	317	585	253	430	683
Other sites permanently reserved (a)	124	7	131	110	11	121	1,757	67	1,824	2,627	46	2,673
Employment (persons)	66	16	82	94	57	151	101	40	141	141	52	193
<b>SITE NIGHTS OCCUPIED ('000) (a)</b>												
<i>September quarter 1993</i>	<i>n.p.</i>	<i>n.p.</i>	<i>34.4</i>	<i>55.2</i>	<i>44.1</i>	<i>99.3</i>	<i>200.4</i>	<i>39.1</i>	<i>239.4</i>	<i>275.8</i>	<i>45.1</i>	<i>320.9</i>
<i>1994—</i>												
July	8.2	2.7	10.9	17.2	15.4	32.6	62.9	13.1	75.9	93.1	17.0	110.1
August	7.7	2.9	10.6	16.8	15.3	32.0	67.2	13.3	80.4	93.0	16.2	109.2
September	13.0	2.8	15.8	20.2	15.6	35.9	71.5	14.0	85.5	91.1	16.2	107.3
<i>September quarter 1994</i>	<i>28.9</i>	<i>8.5</i>	<i>37.3</i>	<i>54.2</i>	<i>46.3</i>	<i>100.6</i>	<i>201.6</i>	<i>40.3</i>	<i>241.9</i>	<i>277.2</i>	<i>49.4</i>	<i>326.7</i>
<b>SITE OCCUPANCY RATES (per cent) (a)</b>												
<i>September quarter 1993</i>	<i>n.p.</i>	<i>n.p.</i>	<i>15.5</i>	<i>20.5</i>	<i>31.6</i>	<i>24.3</i>	<i>47.9</i>	<i>37.9</i>	<i>45.9</i>	<i>48.1</i>	<i>39.1</i>	<i>46.6</i>
<i>1994—</i>												
July	12.2	21.2	13.6	20.0	30.5	23.9	46.5	35.5	44.1	49.1	35.2	46.3
August	11.5	22.8	13.3	19.5	30.2	23.4	46.7	36.1	44.5	49.0	33.6	45.9
September	20.0	22.2	20.3	24.3	31.9	27.1	51.3	39.4	48.9	49.6	34.7	46.6
<i>September quarter 1994</i>	<i>14.5</i>	<i>22.0</i>	<i>15.7</i>	<i>21.2</i>	<i>30.8</i>	<i>24.8</i>	<i>48.2</i>	<i>37.0</i>	<i>45.9</i>	<i>49.2</i>	<i>34.5</i>	<i>46.3</i>
<b>TAKINGS FROM ACCOMMODATION (\$'000)</b>												
<i>September quarter 1993</i>	<i>n.p.</i>	<i>n.p.</i>	<i>566</i>	<i>748</i>	<i>483</i>	<i>1,230</i>	<i>762</i>	<i>241</i>	<i>1,003</i>	<i>1,029</i>	<i>420</i>	<i>1,450</i>
<i>1994—</i>												
July	113	29	142	236	161	397	260	115	375	492	178	670
August	85	30	114	215	169	385	258	105	363	341	164	505
September	221	32	254	300	180	480	349	120	468	349	176	525
<i>September quarter 1994</i>	<i>419</i>	<i>91</i>	<i>510</i>	<i>752</i>	<i>510</i>	<i>1,262</i>	<i>867</i>	<i>339</i>	<i>1,206</i>	<i>1,182</i>	<i>519</i>	<i>1,701</i>

TABLE 10 — CARAVAN PARKS BY STATISTICAL DIVISION, VICTORIA — continued

Particulars	Ovens-Murray (SD)			East Gippsland (SD)			Gippsland (SD)			Victoria		
	Short-term	Long-term	Total	Short-term	Long-term	Total	Short-term	Long-term	Total	Short-term	Long-term	Total
<b>ESTABLISHMENTS, CAPACITY AND EMPLOYMENT</b>												
<i>September quarter 1993</i>												
Establishments	41	8	49	64	9	73	51	15	66	436	157	593
Capacity												
On-site vans	n.p.	n.p.	307	348	71	419	238	140	378	2,084	1,924	4,008
Other powered sites	n.p.	n.p.	3,577	3,178	508	3,686	3,876	946	4,822	36,064	8,735	44,799
Unpowered sites	n.p.	n.p.	1,612	1,585	299	1,884	1,079	233	1,312	13,104	2,044	15,148
Cabins, flats, etc.	n.p.	n.p.	297	316	40	356	107	99	206	2,170	881	3,051
<i>Total capacity</i>	<i>n.p.</i>	<i>n.p.</i>	<i>5,793</i>	<i>5,427</i>	<i>918</i>	<i>6,345</i>	<i>5,300</i>	<i>1,418</i>	<i>6,718</i>	<i>53,422</i>	<i>13,584</i>	<i>67,006</i>
Sites occupied by long-term guests	n.p.	n.p.	301	218	168	386	108	361	469	1,814	4,591	6,405
Other sites permanently reserved (a)	n.p.	n.p.	883	994	32	1,026	2,083	42	2,125	13,847	390	14,237
Employment (persons)	n.p.	n.p.	121	188	23	211	131	35	166	1,321	491	1,812
<i>September quarter 1994—</i>												
Establishments	40	8	48	68	7	75	50	16	66	438	164	602
Capacity												
On-site vans	248	70	318	378	46	424	217	145	362	2,063	1,858	3,921
Other powered sites	3,084	440	3,524	3,362	343	3,705	3,825	982	4,807	36,395	8,567	44,962
Unpowered sites	1,656	81	1,737	1,664	157	1,821	1,142	239	1,381	13,066	2,299	15,365
Cabins, flats, etc.	270	45	315	330	35	365	108	122	230	2,307	1,138	3,445
<i>Total capacity</i>	<i>5,258</i>	<i>636</i>	<i>5,894</i>	<i>5,734</i>	<i>581</i>	<i>6,315</i>	<i>5,292</i>	<i>1,488</i>	<i>6,780</i>	<i>53,831</i>	<i>13,862</i>	<i>67,693</i>
Sites occupied by long-term guests	115	185	300	252	99	351	94	378	472	1,708	4,749	6,457
Other sites permanently reserved (a)	883	48	931	1,057	22	1,079	2,119	29	2,148	14,447	357	14,804
Employment (persons)	103	15	118	209	22	231	141	33	174	1,325	510	1,835
<b>SITE NIGHTS OCCUPIED ('000) (a)</b>												
<i>September quarter 1993</i>	<i>n.p.</i>	<i>n.p.</i>	<i>131.6</i>	<i>134.4</i>	<i>22.0</i>	<i>156.4</i>	<i>219.3</i>	<i>39.8</i>	<i>259.2</i>	<i>1,665.5</i>	<i>538.5</i>	<i>2,204.0</i>
<i>1994</i>												
July	40.6	7.9	48.5	49.0	4.5	53.4	73.8	13.6	87.4	566.3	184.3	750.6
August	40.4	8.2	48.6	48.1	4.4	52.5	72.7	13.5	86.2	565.3	183.6	748.9
September	42.3	8.4	50.7	52.4	4.6	57.0	73.7	13.3	87.0	587.3	183.5	770.8
<i>September quarter 1994</i>	<i>123.4</i>	<i>24.5</i>	<i>147.9</i>	<i>149.5</i>	<i>13.5</i>	<i>163.0</i>	<i>220.1</i>	<i>40.4</i>	<i>260.5</i>	<i>1,718.9</i>	<i>551.4</i>	<i>2,270.3</i>
<b>SITE OCCUPANCY RATES (per cent) (a)</b>												
September quarter 1993	n.p.	n.p.	24.7	26.9	26.0	26.8	45.0	30.5	41.9	34.0	43.1	35.8
<i>1994</i>												
July	24.9	40.0	26.6	28.0	24.8	27.7	45.0	29.5	41.6	34.3	42.9	36.0
August	24.8	41.4	26.6	27.5	24.6	27.3	44.3	29.2	41.0	34.1	42.7	35.9
September	26.8	44.1	28.7	30.7	26.4	30.3	46.4	29.8	42.8	36.5	44.1	38.0
September quarter 1994	25.5	41.8	27.3	28.7	25.2	28.4	45.2	29.5	41.8	34.9	43.2	36.6
<b>TAKINGS FROM ACCOMMODATION (\$'000)</b>												
<i>September quarter 1993</i>	<i>n.p.</i>	<i>n.p.</i>	<i>751</i>	<i>690</i>	<i>216</i>	<i>906</i>	<i>820</i>	<i>299</i>	<i>1,118</i>	<i>9,914</i>	<i>5,387</i>	<i>15,301</i>
<i>1994</i>												
July	232	59	291	256	43	299	374	109	483	3,899	1,876	5,775
August	202	60	262	217	38	255	222	106	328	2,851	1,826	4,677
September	278	76	353	334	44	378	287	105	392	3,852	1,933	5,786
<i>September quarter 1994</i>	<i>712</i>	<i>195</i>	<i>906</i>	<i>807</i>	<i>125</i>	<i>932</i>	<i>883</i>	<i>320</i>	<i>1,203</i>	<i>10,602</i>	<i>5,635</i>	<i>16,238</i>

(a) See Explanatory Notes 11 and 14.



TABLE 11 — VISITOR HOSTELS BY STATISTICAL DIVISION, VICTORIA

<i>Particulars</i>	<i>Melbourne (SD)</i>	<i>Wimmera and Ovens-Murray (SDs)</i>	<i>Balance of State</i>	<i>Total Victoria</i>
<b>ESTABLISHMENTS, CAPACITY AND EMPLOYMENT</b>				
<i>September quarter 1993—</i>				
Establishments	16	8	19	43
Bed spaces	1,245	607	679	2,531
Employment (persons)	64	32	44	140
<i>September quarter 1994—</i>				
Establishments	17	10	25	52
Bed spaces	1,387	657	883	2,927
Employment (persons)	69	34	54	157
<b>GUEST NIGHTS</b>				
<i>September quarter 1993</i>	<i>49,685</i>	<i>7,623</i>	<i>10,425</i>	<i>67,733</i>
<i>1994—</i>				
July	18,385	2,844	5,266	26,495
August	16,464	3,468	3,797	23,729
September	21,889	4,155	6,160	32,204
<i>September quarter 1994</i>	<i>56,738</i>	<i>10,467</i>	<i>15,223</i>	<i>82,428</i>
<b>BED OCCUPANCY RATES (per cent)</b>				
<i>September quarter 1993</i>	<i>43.4</i>	<i>13.7</i>	<i>16.7</i>	<i>29.1</i>
<i>1994—</i>				
July	42.8	14.0	19.2	29.2
August	38.3	17.0	15.5	27.0
September	52.6	21.1	23.3	36.7
<i>September quarter 1994</i>	<i>44.5</i>	<i>17.3</i>	<i>19.4</i>	<i>30.9</i>
<b>GUEST ARRIVALS</b>				
<i>September quarter 1993</i>	<i>17,923</i>	<i>3,104</i>	<i>5,841</i>	<i>26,868</i>
<i>1994</i>				
July	7,363	1,011	2,472	10,846
August	6,692	1,169	2,037	9,898
September	8,678	1,624	3,038	13,340
<i>September quarter 1994</i>	<i>22,733</i>	<i>3,804</i>	<i>7,547</i>	<i>34,084</i>
<b>AVERAGE LENGTH OF STAY (days)</b>				
<i>September quarter 1993</i>	<i>2.8</i>	<i>2.5</i>	<i>1.8</i>	<i>2.5</i>
<i>1994—</i>				
July	2.5	2.8	2.1	2.4
August	2.5	3.0	1.9	2.4
September	2.5	2.6	2.0	2.4
<i>September quarter 1994</i>	<i>2.5</i>	<i>2.8</i>	<i>2.0</i>	<i>2.4</i>
<b>TAKINGS FROM ACCOMMODATION (\$'000)</b>				
<i>September quarter 1993</i>	<i>693</i>	<i>77</i>	<i>144</i>	<i>914</i>
<i>1994</i>				
July	239	37	78	355
August	215	48	61	324
September	278	55	80	413
<i>September quarter 1994</i>	<i>732</i>	<i>141</i>	<i>219</i>	<i>1,092</i>

## EXPLANATORY NOTES

\*\*\*\*\*

## INTRODUCTION

1 This publication contains data for Victoria from a quarterly survey of tourist accommodation establishments. The period covered by the latest survey is the 3 months ended 30 September 1994.

## SCOPE

2 Tourist accommodation establishments currently included in the survey comprise two groups:

- Establishments which provide predominantly short-term accommodation (i.e. for periods of less than 2 months) to the general public. These include:

*Hotels, motels and guest houses, with facilities* being hotels licensed to operate a public bar and motels, private hotels and guest houses all of which provide a bath (or shower) and toilet in most guest rooms and have breakfast available for guests.

NOTE: From December quarter 1993, hotel, motel and guest house establishments with fewer than five rooms have been formally excluded from the scope of this statistical collection. This change in scope resulted in the exclusion of 23 establishments which in the September quarter 1993 Survey aggregates for Victoria represented 2.2 per cent of hotel, motel and guest house establishments but accounted for only 0.2 per cent of accommodation capacity and less than 0.1 per cent of occupancy and takings.

*Holiday flats, units and houses* (excluding establishments predominantly operated on a time share basis) which are operated by owners or managers who have sole letting rights to at least five flats, units or houses or by real estate agents for short-term letting. They are mainly self-contained in terms of cooking, bath (or shower) and toilet facilities and do not have breakfast available for guests. Data for holiday flats, units and houses include short-term owner occupation as well as paying guest occupation.

*Visitor hostels* which provide accommodation to visitors on a bed basis (rather than by the room). This category does not include establishments providing charity type accommodation (e.g. Salvation Army hostels) nor hotels, motels and guest houses without in-room facilities which provide accommodation on a per room basis.

- *Caravan parks* which provide either predominantly short-term (i.e. for periods of less than 2 months) or predominantly long-term (i.e. for periods of 2 months or more) accommodation to the general public and which provide powered sites for caravans and toilet, shower and laundry facilities for guests.

3 Data collected and published for each type of establishment (other than holiday flats, units and houses) include both long-term and short-term guests at these establishments.

4 Establishments which provide more than one type of accommodation (e.g. a motel with attached caravan park) are treated as two or more separate establishments. However, self-contained units, flats, cabins, etc. attached to hotels, motels or to caravan parks are included in the capacity for those establishments and not treated as separate holiday flat, unit or house establishments.

## DEFINITIONS

5 *Number of establishments.* For hotels, motels and guest houses, caravan parks and visitor hostels, the number of establishments within the scope of the survey which operated for any part of the survey period, or which closed temporarily for the quarter for seasonal reasons.

6 *Number of letting entities.* For holiday flats, units and houses, the number of owners, managers or real estate agents within the scope of the survey who operated for any part of the survey period.

7 *Capacity in terms of Guest rooms, Bed spaces, Holiday units or Caravan park sites, etc.* is the maximum number available to accommodate paying guests during the survey period. Capacity closed temporarily for seasonal reasons is included.

8 *Bed spaces.* Three-quarter beds are counted as one bed space; double beds as two bed spaces. Cots are excluded.

\*\*\*\*\*

EXPLANATORY NOTES—*continued*DEFINITIONS—*continued*

9 *Total caravan park capacity* comprises *On-site vans*, *Other powered sites*, *Unpowered sites* and *Cabins*, etc.

10 *Room nights available*. The number of guest rooms available multiplied by the number of days for which they were available during the survey period. Includes operating periods only for establishments closing (other than for seasonal reasons) or opening during the survey period.

11 Occupancy in terms of *Room nights*, *Unit nights* or *Site nights occupied* refers to the total number of nights each guest room, holiday unit or caravan park site, etc. was occupied during the survey period.

NOTE: From September quarter 1988, caravan park sites, etc. permanently reserved for 2 months or more at the end of the survey period but only casually occupied by their tenants have been recorded continuously as *Site nights occupied* irrespective of whether the tenants of individual sites were in residence on any particular night. (See also paragraph 14 below). Previously, usage of these sites was recorded as *Site nights occupied* only when their tenants were in the park. Total site occupancy rates from September quarter 1988 are therefore not comparable with those from previous quarters.

12 Occupancy in terms of *Guest nights* refers to the total number of nights each paying guest stayed during the survey period.

13 *Sites occupied by long-term guests*. The total number of sites, etc. occupied at the end of the survey period by guests who have stayed continuously for 2 months or more.

14 *Other sites permanently reserved*. The total number of powered and unpowered sites, on-site vans and cabins, etc. continuously let for 2 months or more by the end of the survey period to tenants who occupy the sites only on a casual or sporadic basis. Separate data for this item are available only from September quarter 1992.

15 *Occupancy rates* represent occupancy expressed as a percentage of total capacity available during the survey period – e.g.

$$\text{Room occupancy rate (\%)} \text{ for the period} = \frac{\text{Room nights occupied}}{(\text{Guest rooms}) \times (\text{No. of days in the period})} \times 100$$

providing that, for establishments closing (other than for seasonal reasons) or opening during the period, the denominator of the above expression includes only operating periods.

16 *Guest arrivals*. The total number of paying guests counted only on the first night they stayed at the accommodation establishment.

17 *Unit lettings*. The total number of times a holiday flat, unit or house was occupied by a new tenant, counted only on the first night it was occupied by the new tenant.

18 *Average length of stay* is expressed in number of days and calculated:

- for hotels, motels and guest houses and for visitor hostels, by dividing *Guest nights* by *Guest arrivals* and
- for holiday flats, units and houses, by dividing *Unit nights occupied* by *Unit lettings*.

19 *Takings from accommodation*. Revenue received from the provision of accommodation. Takings from meals are excluded. Takings from accommodation for each month generally represent the takings received during that month. Where payments are received in advance of, or after, the provision of accommodation to guests, the monthly figure for takings from accommodation may not necessarily bear a direct relationship to the number of guests accommodated during the month. Rental and storage fees paid to caravan parks for the keeping of private vans in parks are included in the takings of the month they are received.

## EXPLANATORY NOTES —continued

\*\*\*\*\*

## DEFINITIONS —continued

**20** *Star grading.* The grading of hotels and motels with facilities based on the classification system used by members of the Australian Automobile Association (AAA). The gradings are allocated according to a points system based on the amenities and facilities available to guests. Details of the grading scheme are contained in the RACV-RAASA members' publication *Accommodation Australia*, or the individual tour guides produced by members of the AAA. For the purpose of classifying establishments to a star grading in this publication, 'half' star gradings are ignored (e.g. a two and a half star grading has been shown as two star).

**21** *Employment.* The number of persons working at accommodation establishments at the end of the survey period (including working proprietors and those working on other than accommodation activities).

AUSTRALIAN STANDARD  
GEOGRAPHICAL  
CLASSIFICATION

**22.** Statistics presented in this publication have been classified according to the Australian Standard Geographical Classification (ASGC), Edition 2.4. This classification incorporates a number of hierarchic structures of geographic areas. The appropriate spatial units of the main structure of the ASGC used in this publication are defined as follows.

*Statistical Local Areas (SLAs)* are in most cases either identical with, or have been aggregated to, the previously published whole or part legal Local Government Areas (LGAs) comprising boroughs (B), cities (C), municipalities (M), rural cities (RC), shires (S) and towns (T). In aggregate, SLAs cover the whole of the State without gaps or overlaps. In some cases, legal LGAs overlap Statistical Division or Subdivision boundaries and therefore comprise two SLAs (e.g. Part A and Part B).

*Statistical Subdivisions (SSDs).* These consist of one or more SLAs and form the intermediate size spatial unit for the presentation of regional data.

*Statistical Divisions (SDs).* These consist of one or more SSDs. Where SSDs are not shown for statistical purposes, statistical local areas are shown ordered alphabetically within statistical divisions. The Divisions are designed to be relatively homogeneous regions characterised by identifiable social and economic units within the region, under the unifying influence of one or more major towns or cities.

*Statistical Districts.* To provide comparable statistics over a period of time, Statistical Districts have been defined around selected urban centres, with a population of 25,000 or more, experiencing urban growth beyond the legal local government area boundaries. Those districts are intended to contain the anticipated urban spread over the next 20 years.

NOTE: As from 1 July 1994, substantial changes have been made to Local Government Area boundaries in the Statistical Divisions of Barwon, Central Highlands and Loddon-Campaspe respectively. While the geographic boundaries of the Statistical Divisions are unchanged, the changes as they affect Statistical Subdivisions, Local Government Areas and Statistical Local Areas are substantial and are detailed on pages 30 to 31.

## UNPUBLISHED STATISTICS

**23** The ABS may make available on request certain unpublished tourist accommodation statistics. A charge may be made for this information.

## RELATED PUBLICATIONS

**24** Publications for Australia, and each State and Territory, are released by the respective offices of the ABS. Tourist accommodation statistics for past quarters are available on request.

**25** Other ABS publications which may be of interest include:

*Directory of Tourism Statistics* (1130.0) (irregular; first and latest issue: 1991)

*Overseas Arrivals and Departures, Australia* (3401.0) (monthly)

*Tourism Indicators Australia* (8634.0) (quarterly)

*Tourist Accommodation, Australia* (8635.0) (quarterly)

**26** Current publications produced by the ABS are listed in the *Catalogue of Publications and Products* (1101.0). The ABS also issues the *Publications Advice* (1105.0) on Tuesdays and Fridays which lists publications to be released in the next few days. Both the *Catalogue* and *Publications Advice* are available from any ABS office.

\*\*\*\*\*

**EXPLANATORY NOTES** —*continued*

\*\*\*\*\*

SYMBOLS AND  
OTHER USAGES

n.a.	not available
n.p.	not available for publication but included in totals where applicable
r	figure or series revised since previous issue
..	not applicable
—	nil or rounded to zero
(B)	Borough
(C)	City
(RC)	Rural City
(S)	Shire
(T)	Town

27 Where figures have been rounded, discrepancies may occur between totals and the sums of the component items.

ELECTRONIC SERVICES

DISCOVERY	Key *656# for selected current economic, social and demographic statistics.
PC-TELESTATS	This service delivers major economic indicator publications ready to download to your computer on the day of release. Phone (06) 252 5408.
PC-AUSSTATS	Thousands of up-to-date time series are available on this ABS on-line service. For further information, phone (03) 615 7769.
CDATA91	CDATA91 is a CD-ROM (COMPACT DISC - READ ONLY MEMORY) product which allows desktop analysis of 1991 Census Data for small areas. CDATA91 enables users to select data and geographic areas and view this information as tables, maps or graphs and link this census information with other data.

For further information regarding CDATA91, phone (03) 615 7769.

RECORDED MESSAGE SERVICES

0055 86400

*Consumer Price Index*  
*National Accounts*  
*Balance of Payments*  
*Labour Force Estimates*  
*Average Weekly Earnings*  
*Estimated Resident Population*

**STUART JACKSON**  
*Deputy Commonwealth Statistician*

\*\*\*\*\*

## CHANGES TO GEOGRAPHIC BOUNDARIES, VICTORIA (Effective 1 July 1994)

\*\*\*\*\*

The Australian Standard Geographical Classification (ASGC) Edition 2.4, effective from 1 July 1994, reflects substantial changes made to Local Government Area (LGA) boundaries in the Statistical Divisions of Barwon, Central Highlands and Loddon-Campaspe respectively. The changes include amalgamations, boundary changes and creations of new LGAs. While the geographic boundaries of the Statistical Divisions are unchanged, the changes as they affect Statistical Subdivisions, Local Government Areas and Statistical Local Areas are detailed below.

### Statistical Divisions/Subdivisions (Component areas from 1 July 1994)

### Composition in terms of previous statistical regions

#### Barwon (SD)

##### Greater Geelong City Part A (SSD)

Bellarine - Inner	Bellarine (RC) - Pt A
Corio - Inner	Bannockburn (S) - Pt A and Corio (S) - Pt A
Geelong	Geelong (C)
Geelong West	Geelong West (C)
Newtown	Newtown (C)
South Barwon - Inner	Barrabool (S) - Pt A, a minor part of Barrabool (S) - Pt B, South Barwon (C) - Pt A and a minor part of South Barwon (C) - Pt B

##### East Barwon (SSD)

Greater Geelong (C) - Pt B	Bellarine (RC) - Pt B and part of South Barwon (C) - Pt B
Queenscliffe (B)	No change
Surf Coast (S) - Pt A	The major part of Barrabool (S) - Pt B and part of South Barwon (C) - Pt B

##### West Barwon (SSD)

Colac (C)	No change
Colac (S)	Colac (S) and part of Winchelsea (S)
Greater Geelong (C) - Pt C	Corio (S) - Pt B
Otway (S)	No change
Southern Rural (S) - Central	Leigh (S)
Southern Rural (S) - East	Bannockburn (S) - Pt B
Surf Coast (S) - Pt B	Part of Winchelsea (S)

#### Central Highlands (SD)

##### Ballarat City (SSD)

Ballarat (C) - Central	Ballarat (C)
Ballarat (C) - Inner North	Ballarat (S) - Pt A, part of Bungaree (S) - Pt A, a small part of Buninyong (S) - Pt A and a minor part of Ripon (S)
Ballarat (C) - North	Ballarat (S) - Pt B
Ballarat (C) - South	Sebastopol (B) and parts of Buninyong (S) - Pts A and B and part of Grenville (S) - Pt A

##### East Central Highlands (SSD)

Bacchus Marsh (S)	No change
Creswick (S)	No change
Daylesford & Glenlyon (S)	No change
Moorabool (S) - East	Ballan (S)
Moorabool (S) - West	Bungaree (S) - Pt B, part of Bungaree (S) - Pt A and parts of Buninyong (S) - Pts A and B

**CHANGES TO GEOGRAPHIC BOUNDARIES, VICTORIA (Effective 1 July 1994)—continued**

\*\*\*\*\*

**Statistical Divisions/Subdivisions**  
(Component areas from 1 July 1994)

**Composition in terms of previous statistical regions**

**West Central Highlands (SSD)**

Ararat (C)	No change
Ararat (S)	No change
Avoca (S)	No change
Lexton (S)	No change
Ripon (S)	The major part of Ripon (S)
Southern Rural (S) - West	Grenville (S) - Pt B , part of Grenville (S) - Pt A and parts of Buninyong (S) - Pts A and B
Talbot & Clunes (S)	No change

**Loddon-Campaspe (SD)**

**Greater Bendigo City Part A (SSD)**

Eaglehawk	Eaglehawk (B)
Greater Bendigo (C) - Central	Bendigo (C)
Huntly - Inner	Huntly (S) - Pt A
Marong - Inner	Marong (RC) - Pt A
Strathfieldsaye - Inner	Strathfieldsaye (S) - Pt A

**Northern Loddon-Campaspe (SSD)**

No change

**Central Loddon-Campaspe (SSD)**

Bet Bet (S)	No change
Castlemaine (S)	No change
Greater Bendigo (C) - Huntly Bal	Huntly (S) - Pt B
Greater Bendigo (C) - Marong Bal	Marong (RC) - Pt B
Greater Bendigo (C) - S'saye Bal	Strathfieldsaye (S) - Pt B
McIvor (S)	No change
Maldon (S)	No change
Maryborough (C)	No change
Metcalfe (S)	No change
Newstead (S)	No change
Tullaroop (S)	No change

**South Loddon-Campaspe (SSD)**

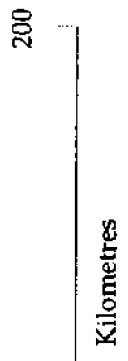
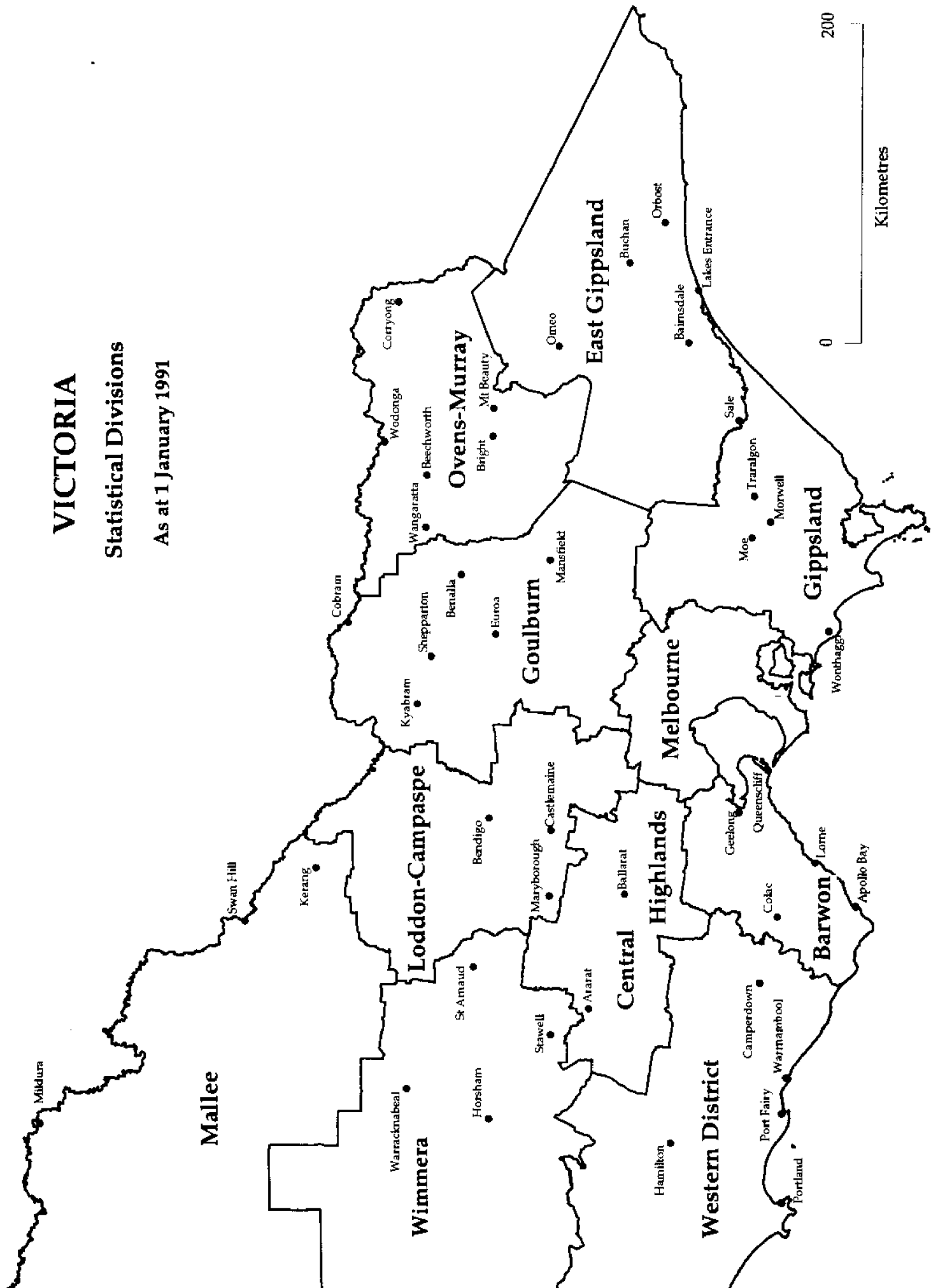
No change

\*\*\*\*\*

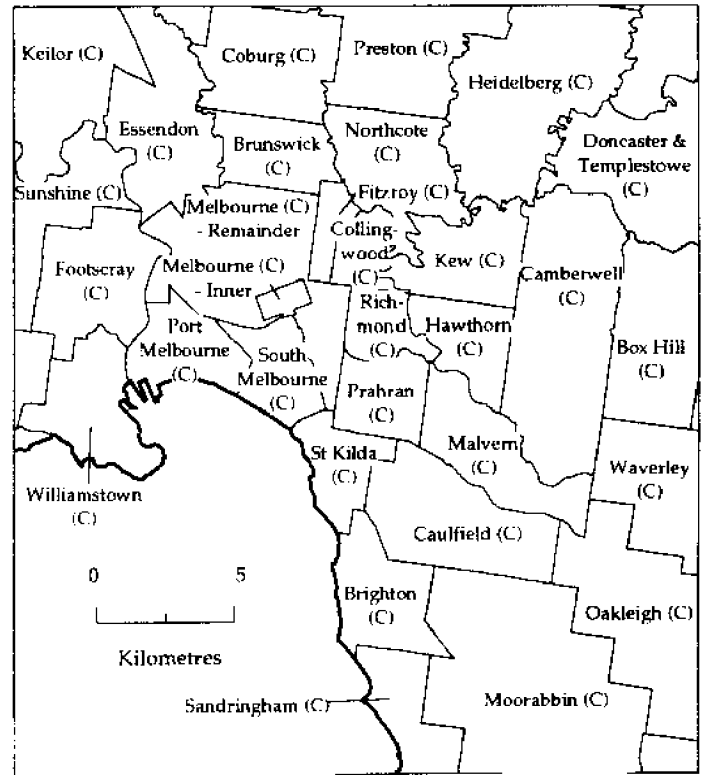
# VICTORIA

## Statistical Divisions

As at 1 January 1991







# MELBOURNE STATISTICAL DIVISION

Statistical Local Areas

As at July 1994 (interim)  
City (C), Shire (S)



## For more information ...

The ABS publishes a wide range of statistics and other information on Australia's economic and social conditions. Details of what is available in various publications and other products can be found in the *ABS Catalogue of Publications and Products* available at all ABS Offices (see below for contact details).

### Information Consultancy Service

Information tailored to special needs of clients can be obtained from the Information Consultancy Service available at ABS Offices (see Information Inquiries below for contact details).

### National Dial-a-Statistic Line

0055 86 400

(Steadycom P/L: premium rate 25c/21.4 secs.)

This number gives 24-hour access, 365 days a year for a range of statistics.

### Electronic Data Services

A large range of data is available via on-line services, diskette, magnetic tape, tape cartridge and CD ROM. For more details about our electronic data services, contact any ABS Office (see below).

### Bookshops and Subscriptions

There are over 400 titles of various publications available from ABS bookshops in all ABS Offices (see below Bookshop Sales for contact details). The ABS also provides a subscription service through which nominated publications are provided by mail on a regular basis at no additional cost (telephone Publications Subscription Service toll free on 008 02 0608 Australia wide).

## Sales and Inquiries

Regional Offices	Information Inquiries	Bookshop Sales
SYDNEY (02)	268 4611	268 4620
MELBOURNE (03)	615 7000	615 7829
BRISBANE (07)	222 6351	222 6350
PERTH (09)	360 5140	360 5307
ADELAIDE (08)	237 7100	237 7582
HOBART (002)	20 5800	20 5800
CANBERRA (06)	207 0326	207 0326
DARWIN (089)	43 2111	43 2111
<b>National Office</b>		
ACT (06)	252 6007	008 020 608

### ABS Email Addresses

Keylink	STAT.INFO/ABS
X.400	(C:AU.A:TELMEMO.O:ABS.SN:INFO.FN:STAT)
Internet	STAT.INFO@ABS. TELEMEMO.AU



Information Services, ABS, PO Box 10, Belconnen ACT 2616



© Commonwealth of Australia 1994

**Recommended retail price: \$25.00**



**2863520009940**  
ISSN 1031-2900